

# Service Assurance in MDONS

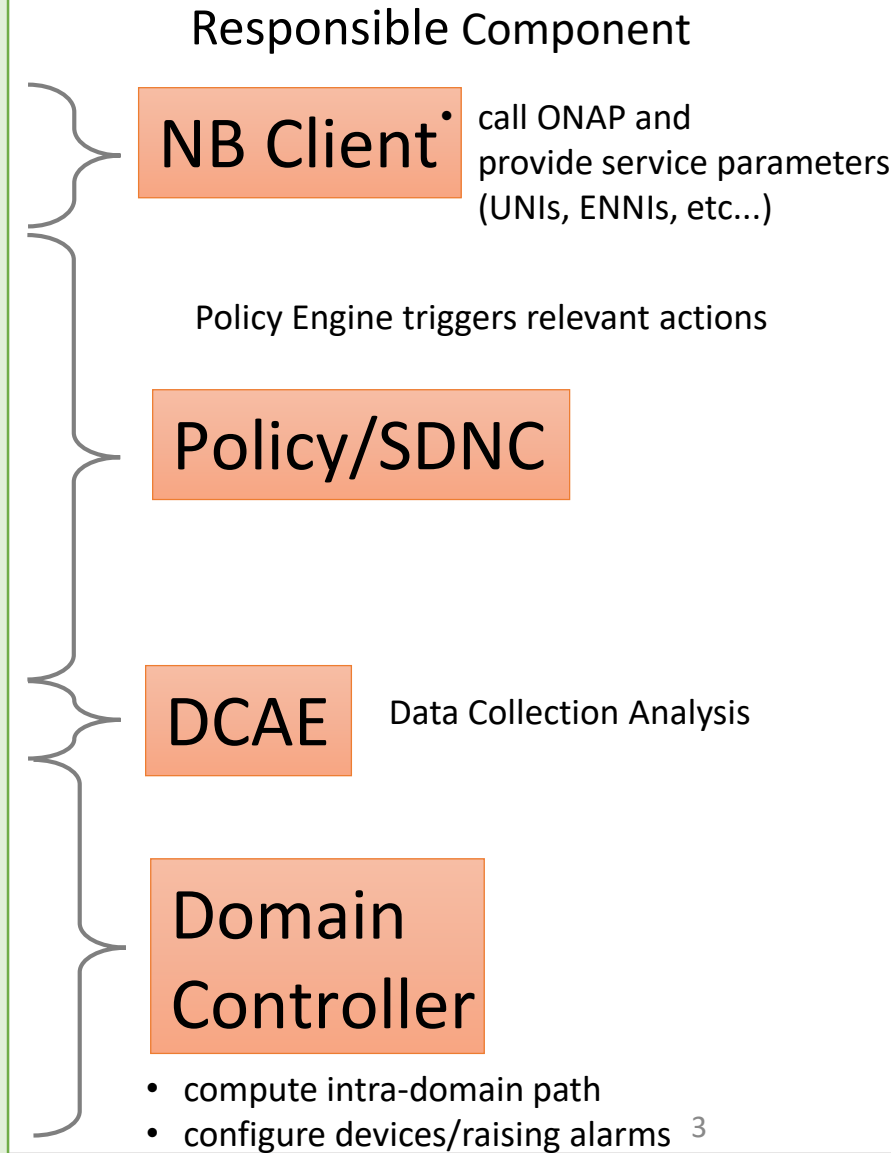
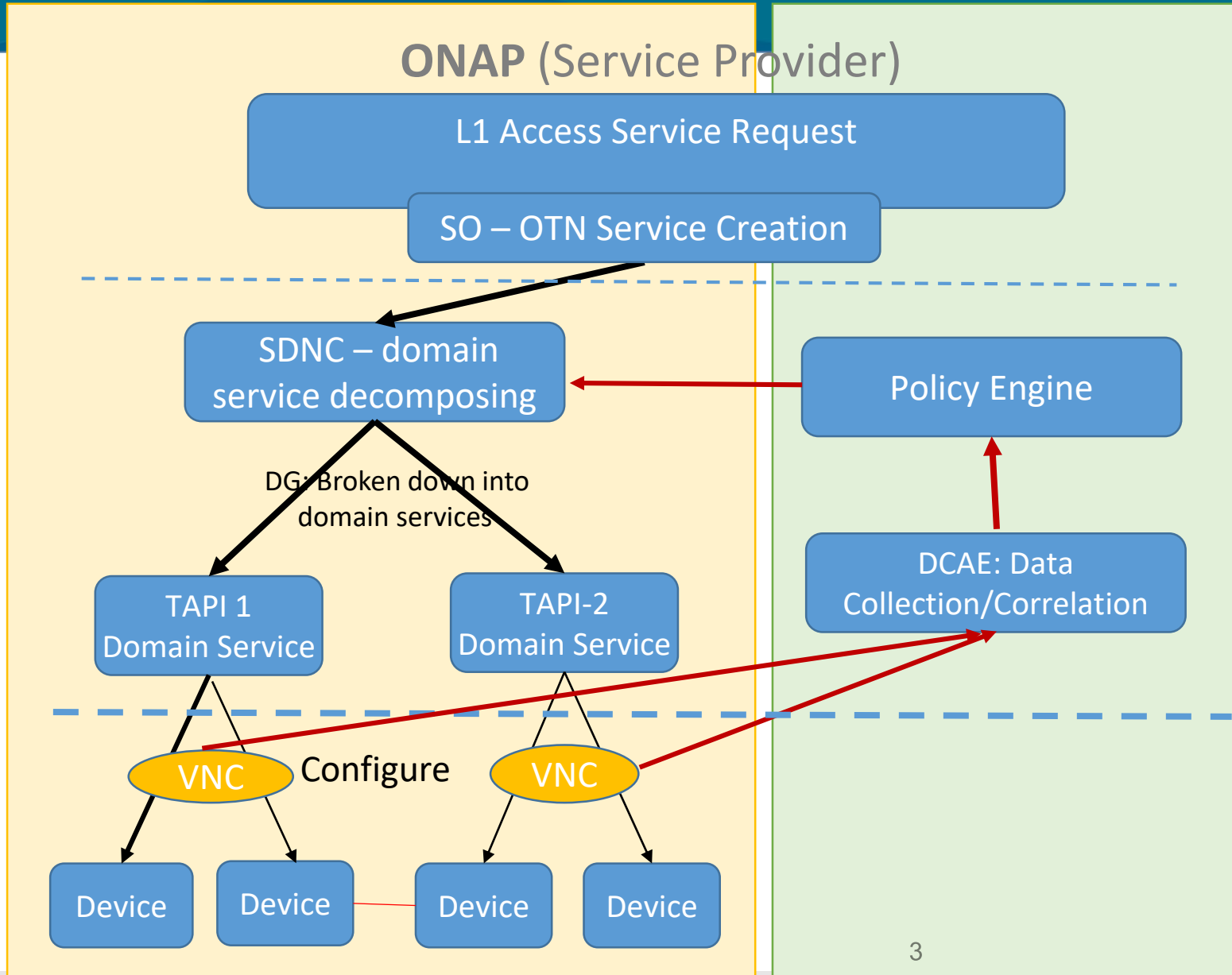
## Introduction and work items in Guilin

April 2020 Xin Miao

# Contents

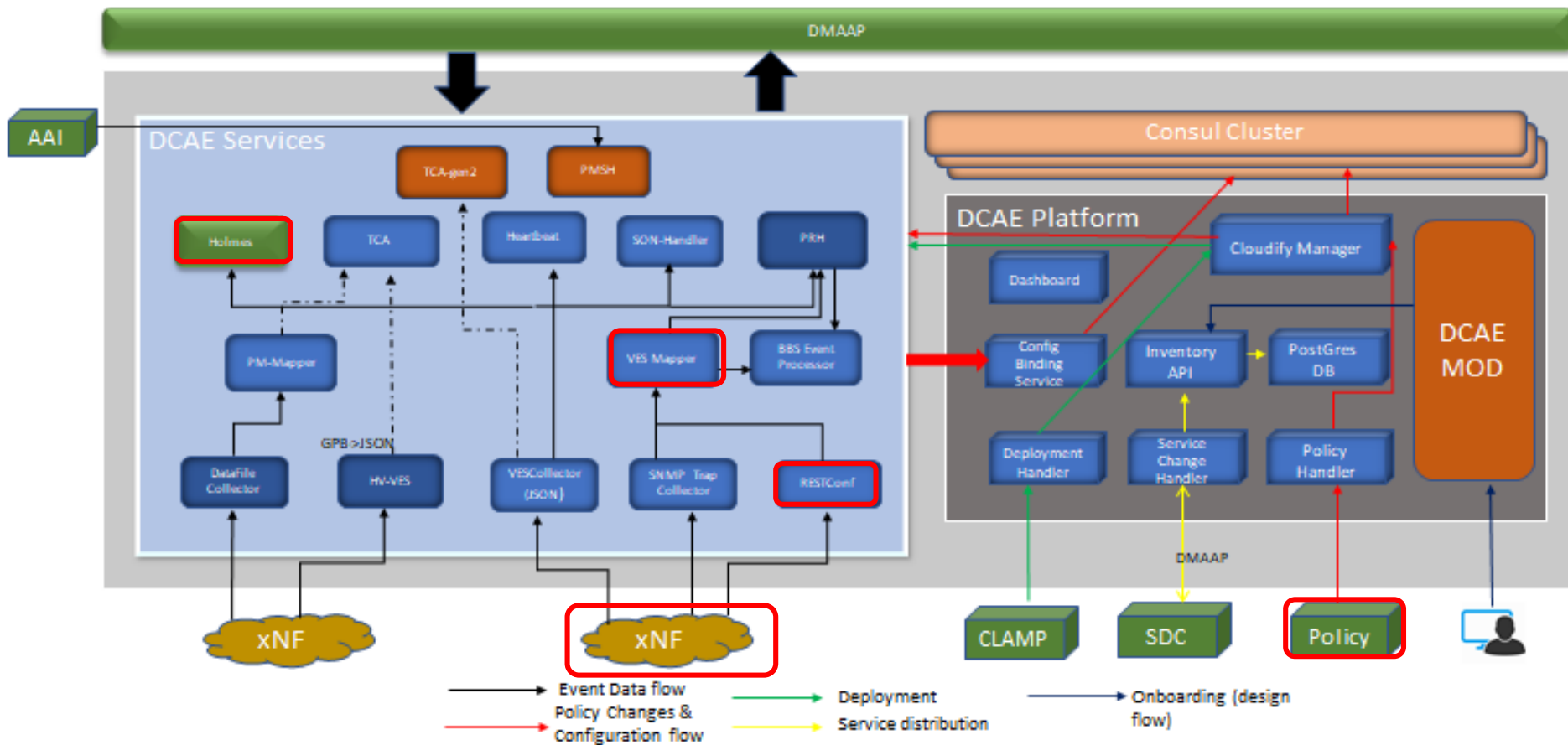
- **Introduction**
- Closed Loop – IDL Failure
- MDONS Data Collection
- Backup

# Closed Loop Flow Hierarchy (Run Time)



# DCAE in Frankfurt

## DCAE Architecture (Frankfurt)



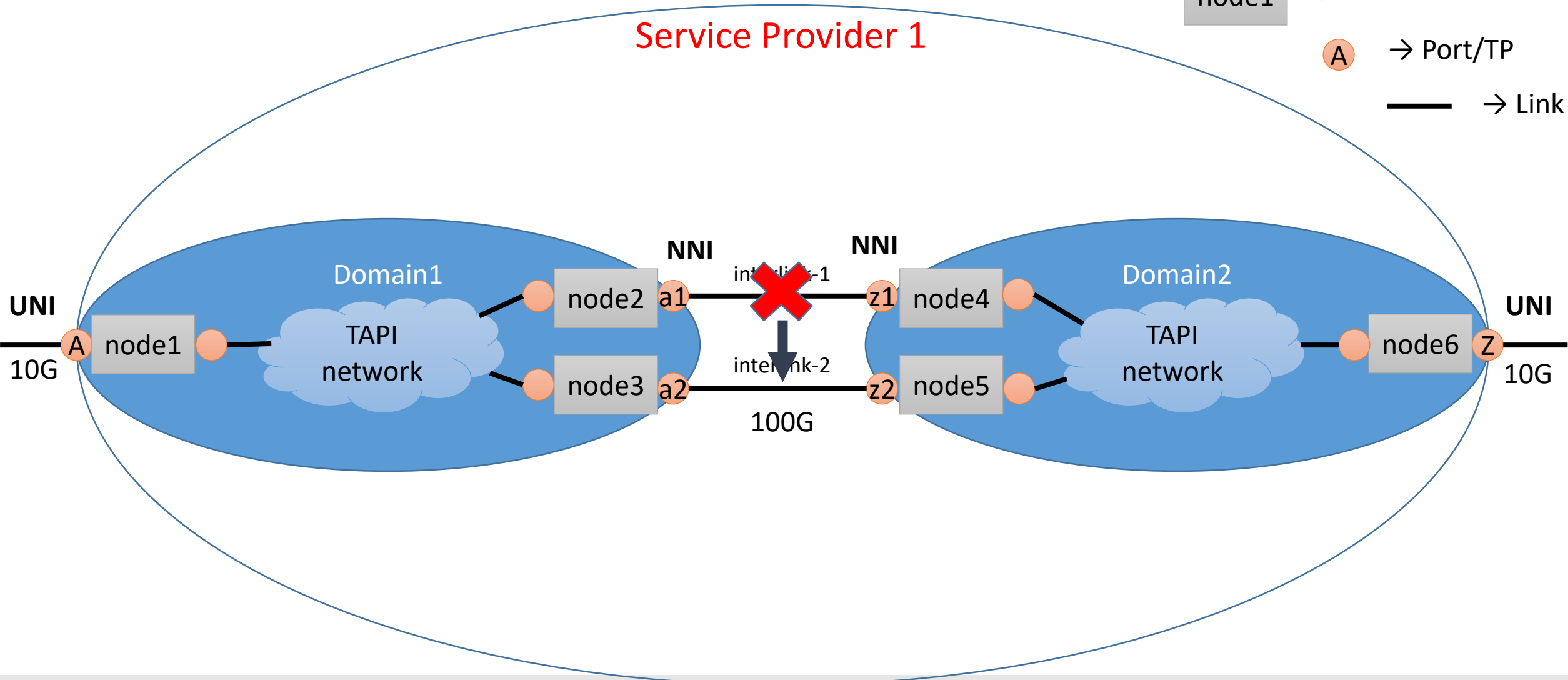
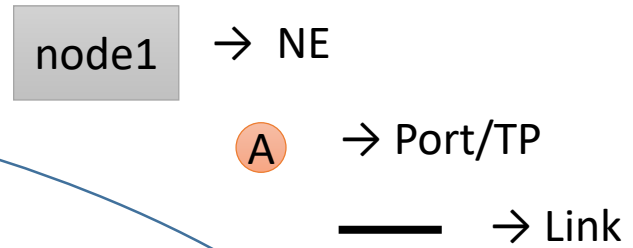
Touched  
mS/components

**MDDOS Services**  
RC Collector  
VES Mapper  
Holmes

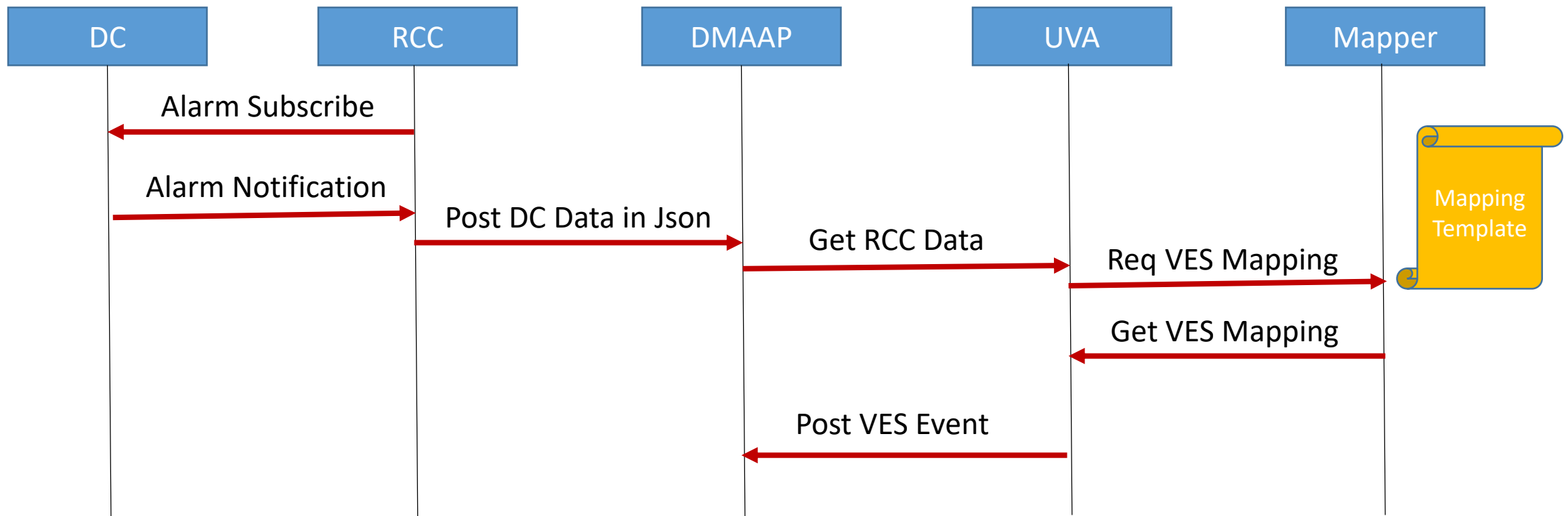
# Contents

- Introduction
- **Closed Loop – IDL Failure**
- MDONS Data Collection
- Backup

# MDONS Closed Loop - Cross Domain OTN service IDL failure



# MDONS Data Collection – for CL



## Legend:

**DC** = Domain Controller   **RCC** = RestConf Collector   **UVA** = Universal VES Adapter

- VNC Alarm Notification
- AAI APIs
- SDNC APIs
  - for OTN service instance update in ONAP
  - for SDNC to all DGs to re-create domain OTN services



# Alarm Correlation - Holmes

- Drools Rules from SDC/Holmes UI
- AAI provisioning

# Policy Engine - Apex

- DCAE Event
- Operational Policy
- Actor/Action

# SDC/DCAEMOD/CLAMP

- SDC - MDONS CL Design Time
- CLAMP for mS configuration/CL instantiation - runtime

- Pre-conditions:
  - Cross Domain OTN Services Provisioned in ONAP
  - CL Defined and deployed
  - Policy defined
  - CL instance instantiated in DCAE and Policy distributed to Apex Engine
- IDL down alarms generation at NE simulators for both DCs
- Alarms received at RCC
- Alarms correlated at Holmes
- Action triggered at SO or SDNC
- OTN Service associated with another IDL
- Alarms resolved -> down IDL up

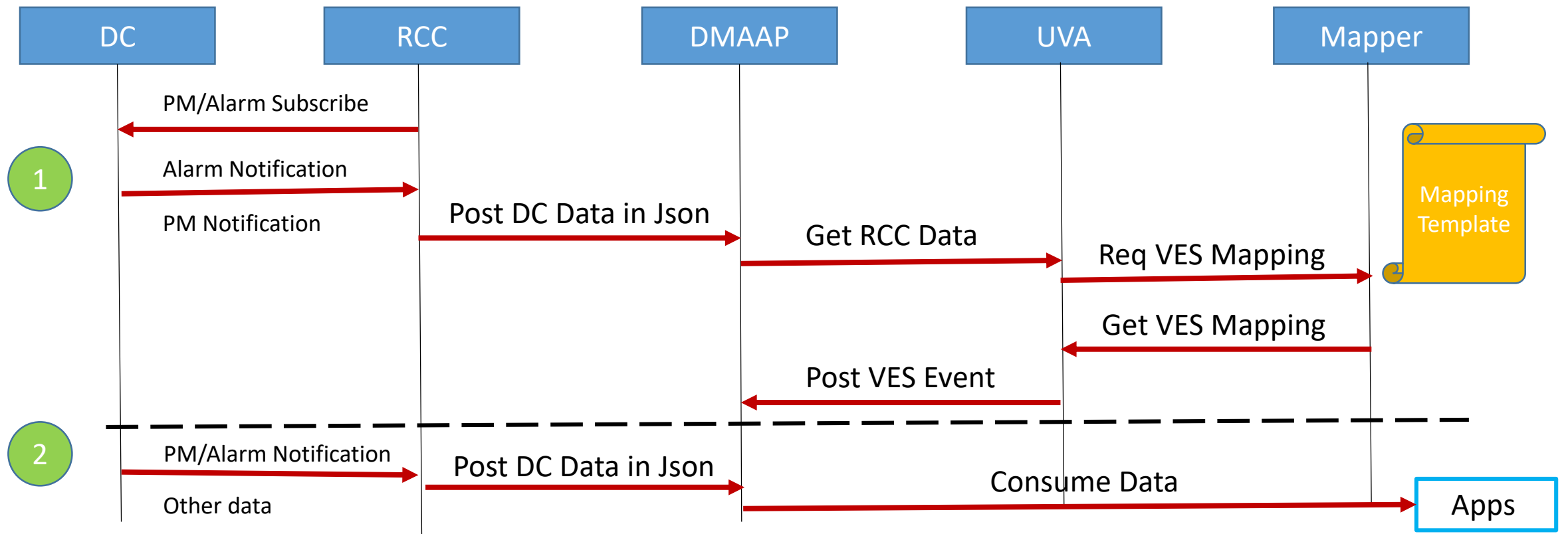
# Contents

- Introduction
- Closed Loop – IDL Failure
- **MDONS Data Collection**
- Backups

# MDONS Data Collection

- Data Collection
  - Collectors
    - RCC – Restconf Collector
    - Other Collectors (?)
  - Data Types
    - Alarms
    - PMs
    - Others // ... depend on VNC API availability
      - Topology
      - Domain Service related
      - Any types other than Alarm and PM
- Data format //... both VES and non VES
- Data Storage in ONAP
  - 3<sup>rd</sup> Party Data Lake (?)
  - Post on 3<sup>rd</sup> data router
- Apps/Micro-services
  - Data normalization

# Data Collection Flow



## Legend:

**DC** = Domain Controller    **RCC** = RestConf Collector    **UVA** = Universal VES Adapter

# Contents

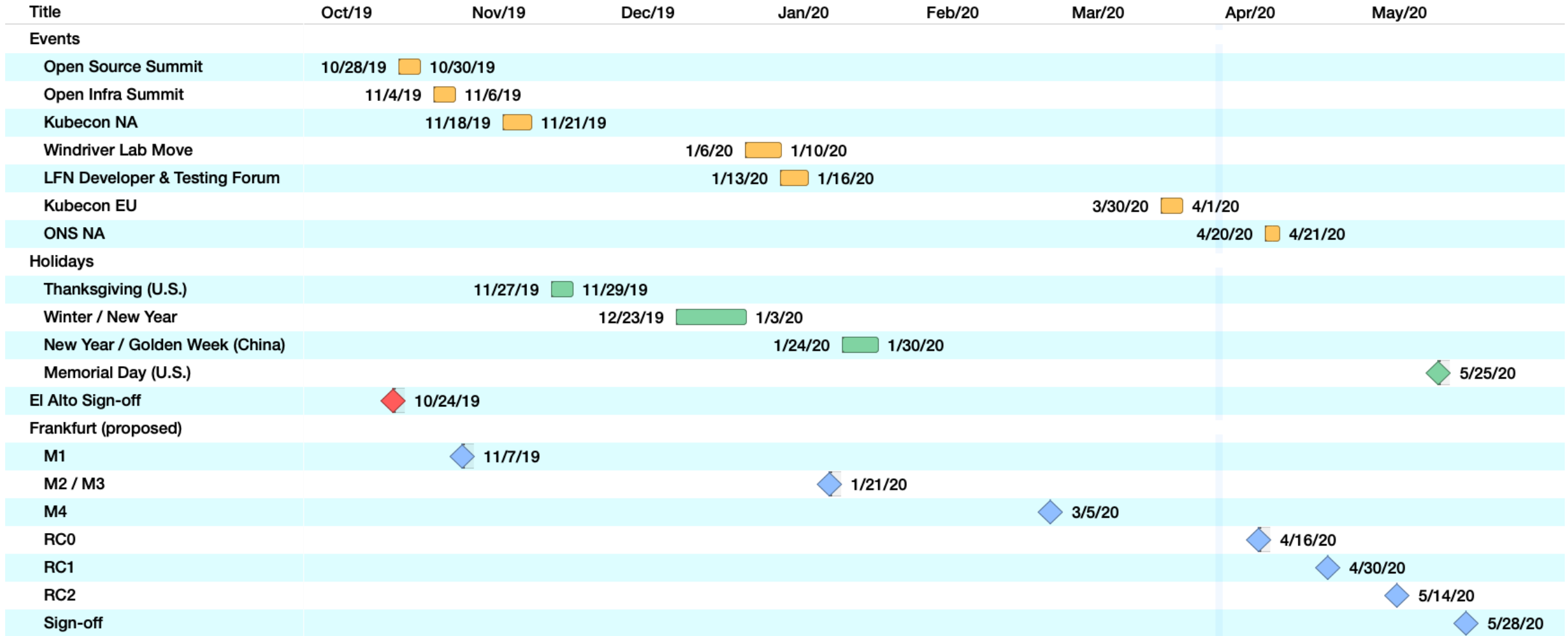
- Introduction
- Closed Loop – IDL Failure
- MDONS Data Collection
- **Backups**



# MDONS Integration Test Status

- Environment
  - FNC Local cluster in master branch.
  - WindRiver Lab - SB00 cluster
- Progress – Done
  - Passed RC0, RC1
  - **Final E2E verification for RC2.**

# Frankfurt timeline (latest)



# Frankfurt Rel. Status

| Work Item  | Status Update   |
|--|---|
| <p>MDONS Integration Testing</p> <ul style="list-style-type: none"><li>• Testbed setup in community</li><li>• Local verification in master branch</li><li>• Component branch out</li><li>• Issues?</li></ul> | <ul style="list-style-type: none"><li>• Windriver connection set up – ongoing</li><li>• E2E LCM master branch verification – ongoing</li><li>• <b>UUI</b>, <b>OOF</b>, Policy, APPC, Multi-cloud, etc – No</li><li>• SO issue not MDONS related</li></ul> |
| <p>Equipment / PNF Simulator (integration)</p> <ul style="list-style-type: none"><li>• Which functions?</li><li>• Where is it hosted?</li><li>• Usage</li></ul>  | <ul style="list-style-type: none"><li>• DC Simulator for NB API verification</li><li>• Support use case integration test automation</li></ul>   |
| <p>Documentation</p> <ul style="list-style-type: none"><li>• Enhance MDONS wiki page</li><li>• Include sample service templates?</li></ul>   | <ul style="list-style-type: none"><li>• Ongoing</li></ul>   |
| <p>ONAP Marketing</p> <ul style="list-style-type: none"><li>• Solution brief addition for MDONS</li><li>• Frankfurt Rel. Arch. white-paper updates</li></ul>   | <p>Provided updated info on MDONS to ONAP marketing team for inclusion in Frankfurt sol. Brief.</p>   |

# MDONS Guilin Work Items

| Feature   | Priority |
|---|----------|
| Inter-domain optimizations (OOF) <ul style="list-style-type: none"><li>• API to support IDL selection</li><li>• SDNC/DG interfacing OOF</li></ul>   | 1        |
| Asynchronous service activation handling (SO / SDNC) <ul style="list-style-type: none"><li>• OpenROADM notification</li></ul>   | 3        |
| Service Assurance support (DCAE) <ul style="list-style-type: none"><li>• Alarms / PMs – OpenROADM, T-API Notifications,</li><li>• Alarm types, Data collectors / adaptors (VES, JSON)</li><li>• Event types - Fault handling, OTN restoration</li></ul> | 2        |
| Inter-carrier / ONAP instances support (External-API) <ul style="list-style-type: none"><li>• Cross-carrier service decomposition</li><li>• Supporting endpoint/ENNI topology updates</li><li>• MEF Legato / Interlude enhancements</li></ul>           | 2        |

Note: Adding supporting Virtuora NC enhancements for OpenROADM & T-API