

# **ORAN Information Model Sample**

This document was generated on 2019-08-05 by "ORAN Model GenDoc Template" version 0.01

# 1 Introduction

This document contains the Word presentation of the model generated from the ONAP Eclipse Papyrus UML Information model using gendoc. This format is provided to assist the reader that does not use UML or has no access to UML tools.

## 2 Associations

### 2.1 Overview

**Qualified Name:** Sample::Associations

#### 2.1.1 Associations

##### 2.1.1.1 *DogHasToy* association

**Qualified Name:** Sample::Associations::DogHasToy

**Table 2-1 Member ends for Association DogHasToy**

Attribute Name	Aggreg.	Navig.	Mult.	Type	Description	Stereotypes
toy	composite	Navig.	0..*	Toy	Toys presently in the dog's possession.	
dog	none	Not navig.	1	Dog		

##### 2.1.1.2 *CatStuckInTree* association

**Qualified Name:** Sample::Associations::CatStuckInTree

**Table 2-2 Member ends for Association CatStuckInTree**

Attribute Name	Aggreg.	Navig.	Mult.	Type	Description	Stereotypes
tree	none	Navig.	0..1	Tree	The current tree that the cat is stuck in.	

Attribute Name	Aggreg.	Navig.	Mult.	Type	Description	Stereotypes
cat	none	Navig.	0..*	Cat	The current cats stuck in the given tree.	

2.1.1.3 *CatPlaysWithMouse* association

**Qualified Name:** Sample::Associations::CatPlaysWithMouse

**Table 2-3 Member ends for Association CatPlaysWithMouse**

Attribute Name	Aggreg.	Navig.	Mult.	Type	Description	Stereotypes
mouse	shared	Navig.	0..*	Mouse	Mouse (or mice) that the cat is presently playing with.	
cat	none	Not navig.	1	Cat		

2.1.1.4 *DogSleepsInKennel* association

**Qualified Name:** Sample::Associations::DogSleepsInKennel

**Table 2-4 Member ends for Association DogSleepsInKennel**

Attribute Name	Aggreg.	Navig.	Mult.	Type	Description	Stereotypes
kennel	none	Not navig.	0..*	Kennel		
dog	none	Not navig.	0..*	Dog		

### 3 Diagrams

#### 3.1 Overview

**Qualified Name:** Sample::Diagrams

**Description:**

##### 3.1.1 Diagrams

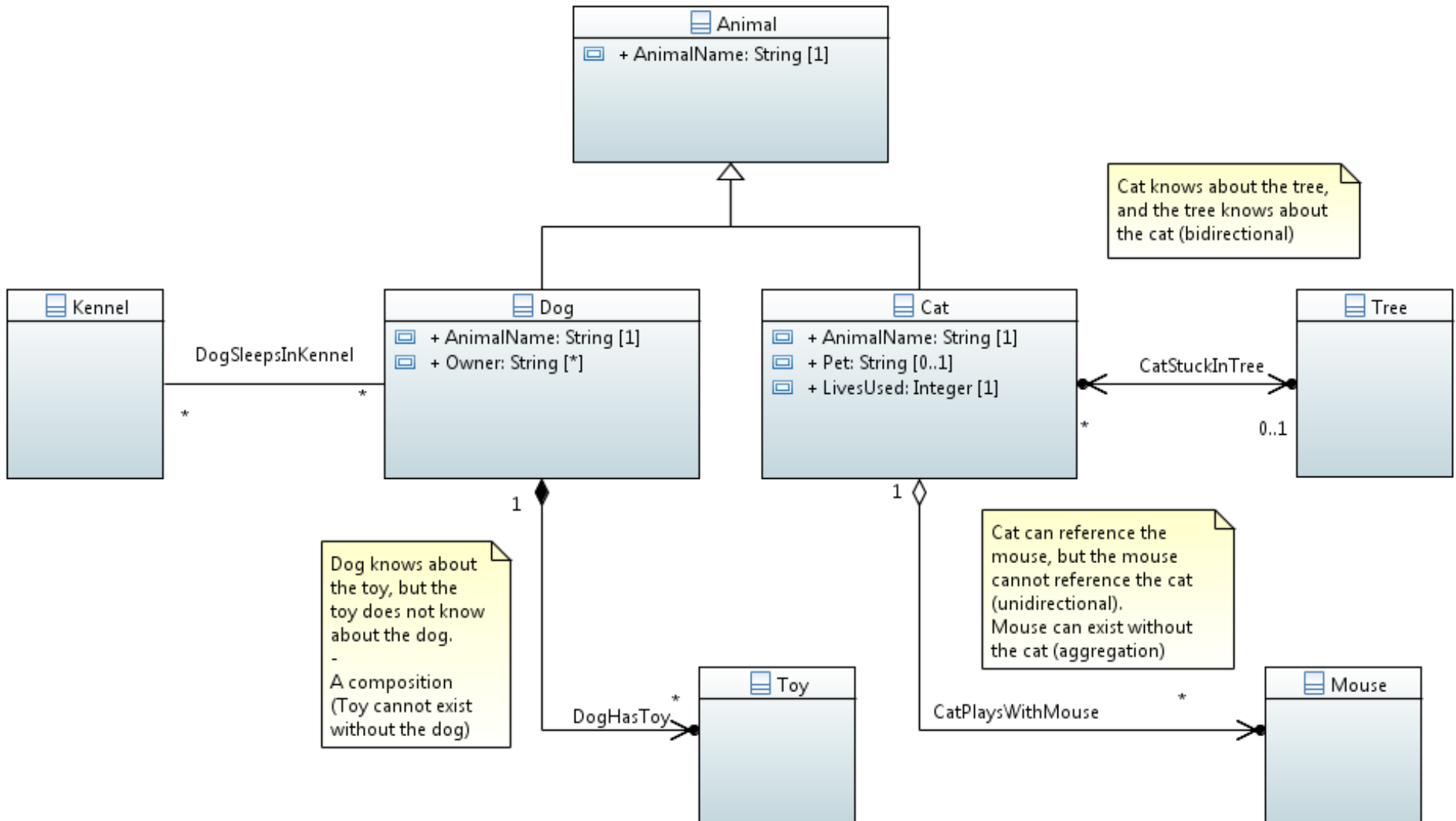


Figure 3-1: Diagram Sample One

## 4 ObjectClasses

### 4.1 Overview

**Qualified Name:** Sample::ObjectClasses

#### 4.1.1 Classes

##### 4.1.1.1 *Animal class*

**Qualified Name:** Sample::ObjectClasses::Animal

**Description:**

A living organism that feeds on organic matter.

**Applied Stereotypes:**

**Table 4-1 Attributes for Package ObjectClasses**

Attribute Name	Type	Mult.	Description	Stereotypes
AnimalName	String	1	Animal name.	

##### 4.1.1.2 *Cat class*

**Qualified Name:** Sample::ObjectClasses::Cat

**Parent class:** Animal

**Applied Stereotypes:**

**Table 4-2 Attributes for Package ObjectClasses**

Attribute Name	Type	Mult.	Description	Stereotypes
Pet	String	0..1	The human that is the cat's pet.	
LivesUsed	Integer	1	The number of lives of the 9 available that the cat has used.	
tree	Tree	0..1	The current tree that the cat is stuck in.	
mouse	Mouse	0..*	Mouse (or mice) that the cat is presently playing with.	
AnimalName	String	1	Animal name.	

#### 4.1.1.3 Dog class

**Qualified Name:** Sample::ObjectClasses::Dog

**Parent class:** Animal

**Applied Stereotypes:**

**Table 4-3 Attributes for Package ObjectClasses**

Attribute Name	Type	Mult.	Description	Stereotypes
Owner	String	0..*	The owner of the doc.	
toy	Toy	0..*	Toys presently in the dog's possession.	
AnimalName	String	1	Animal name.	

#### 4.1.1.4 Kennel class

**Qualified Name:** Sample::ObjectClasses::Kennel

**Description:**

A small shelter for a dog.

**Applied Stereotypes:**

#### 4.1.1.5 Mouse class

**Qualified Name:** Sample::ObjectClasses::Mouse

**Description:**

a small rodent that typically has a pointed snout.

**Applied Stereotypes:**

#### 4.1.1.6 Toy class

**Qualified Name:** Sample::ObjectClasses::Toy

**Description:**

an object for a child (or dog) to play with.

**Applied Stereotypes:**

#### 4.1.1.7 Tree class

**Qualified Name:** Sample::ObjectClasses::Tree

**Description:**

a woody perennial plant.

**Applied Stereotypes:**

**Table 4-4 Attributes for Package ObjectClasses**

Attribute Name	Type	Mult.	Description	Stereotypes
cat	Cat	0..*	The current cats stuck in the given tree.	

