

# Modeling, Use Case and Architecture Process



- ONAP Way of Working

# Modeling Process

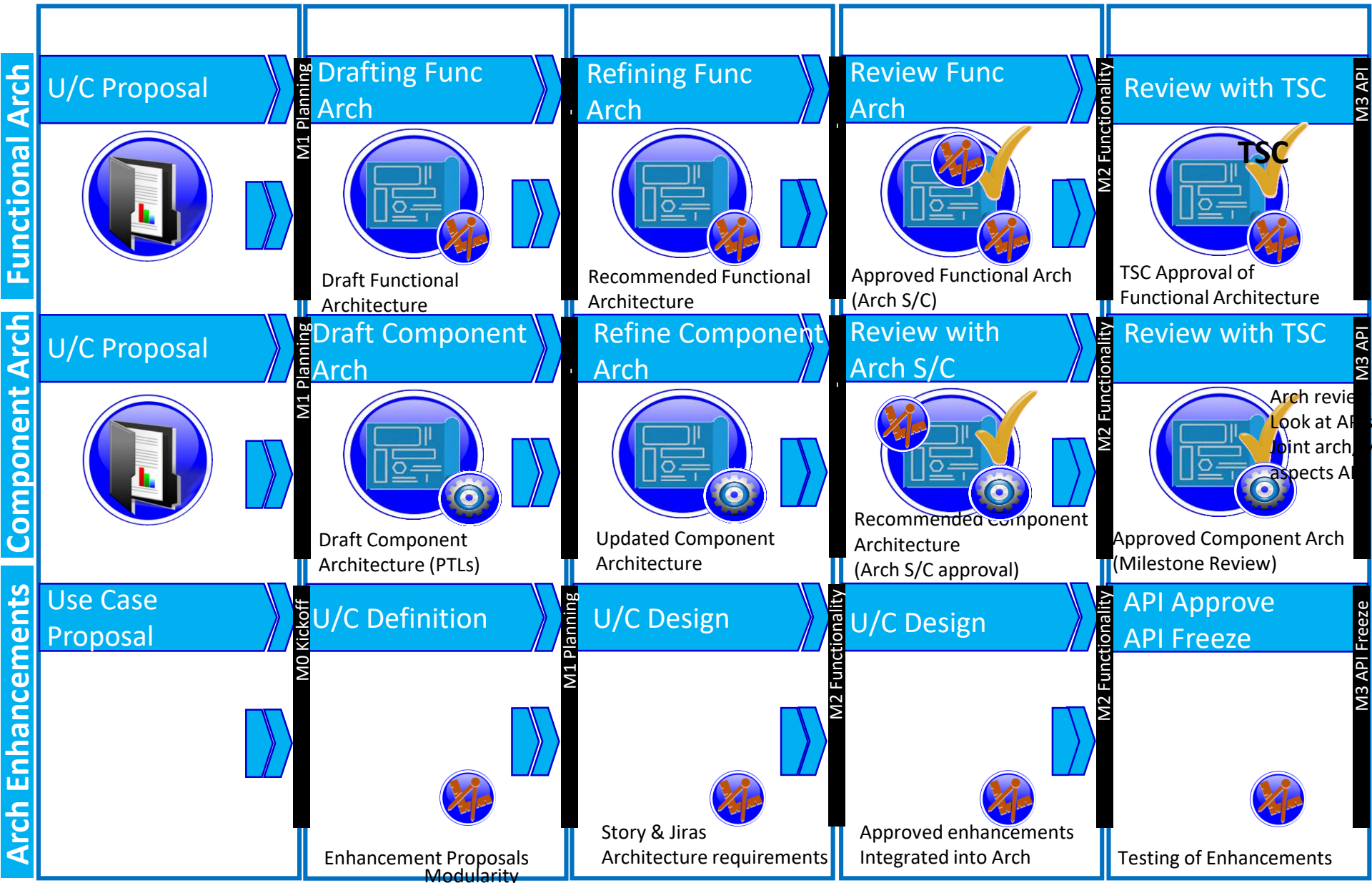


WHAT	High Level Model Req	Experimental Model	Preliminary Model	Approved Model	Approved Model
	 <p>Model Planning</p>	 <p>Input model</p>	 <p>Discussion Model</p>	 <p>Data Model Freeze Clean Model</p>	
WHEN Timeline	High Level Model Requirements	M0 Kickoff Model Plan Work	M1 Planning Refine Model	M2 Functionality Approve Model Model Launch	M3 API Freeze Model Final Model Freeze
					
WHO	Model S/C	Model S/C Use Case Team	Model S/C Architecture	Model S/C	Use Case Team
	 <p>Model S/C Use Case Team</p>	 <p>Model S/C Use Case Team Platform Project Teams</p>	 <p>Model S/C Architecture</p>	 <p>Model S/C Use Case Team</p>	 <p>Use Case Team</p>
	Before M0 to M0 Kickoff	From M0 Kickoff to M1 Project Planning	-	M1 Project Planning to M2 Functionality Freeze	M2 Functionality Freeze to M3 API

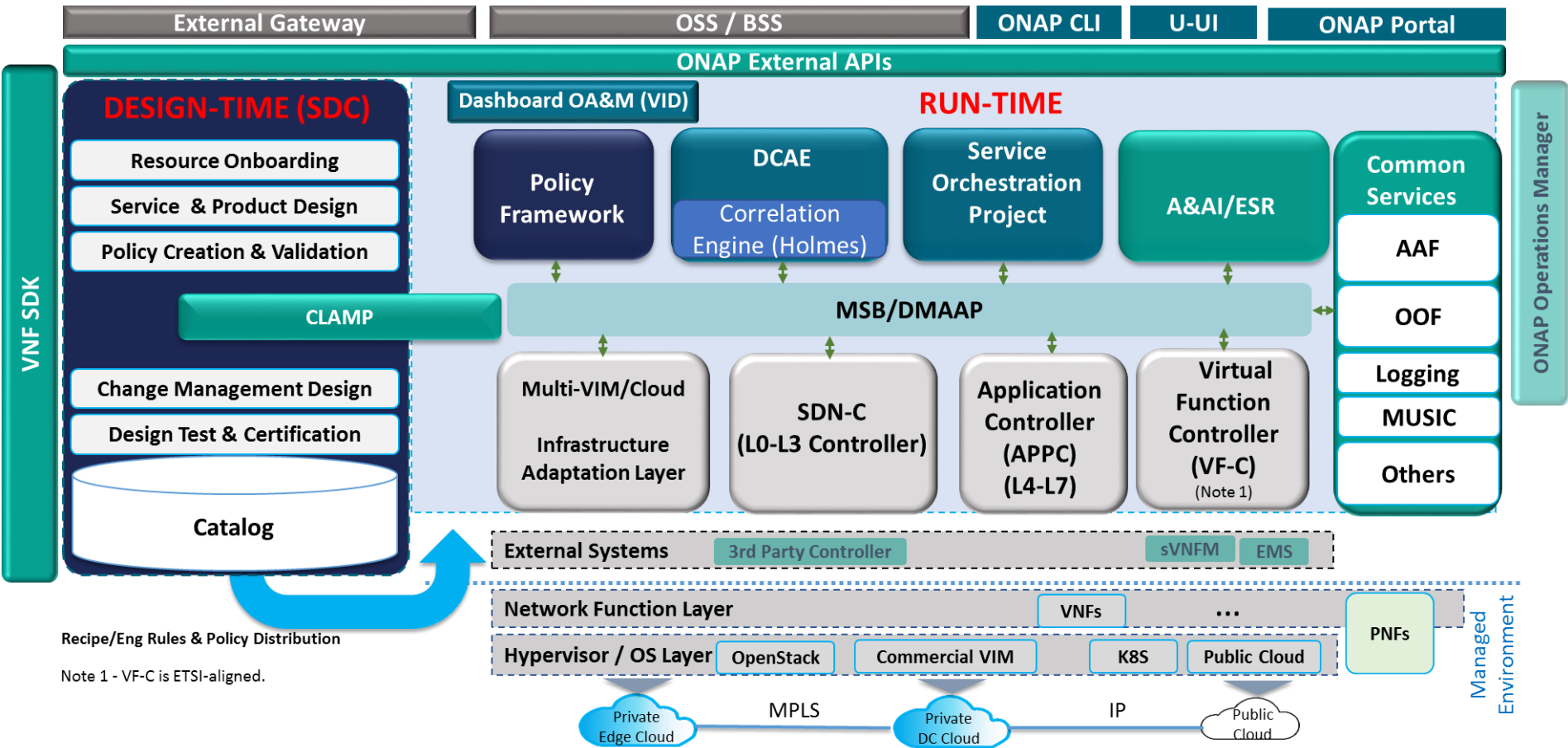
# Info and Data Modeling Co-Evolution



# Architecture Process



Arch improvements  
Treated like a U/C



Recipe/Eng Rules & Policy Distribution

Note 1 - VF-C is ETSI-aligned.



# Use Case (U/C) Process



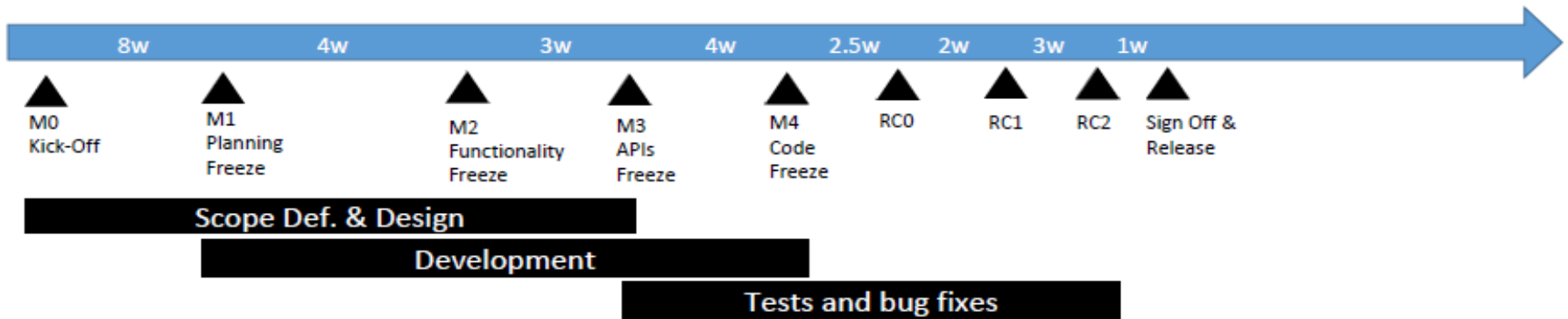
# Architecture Process



# Release D/(E)/F/G Timelines

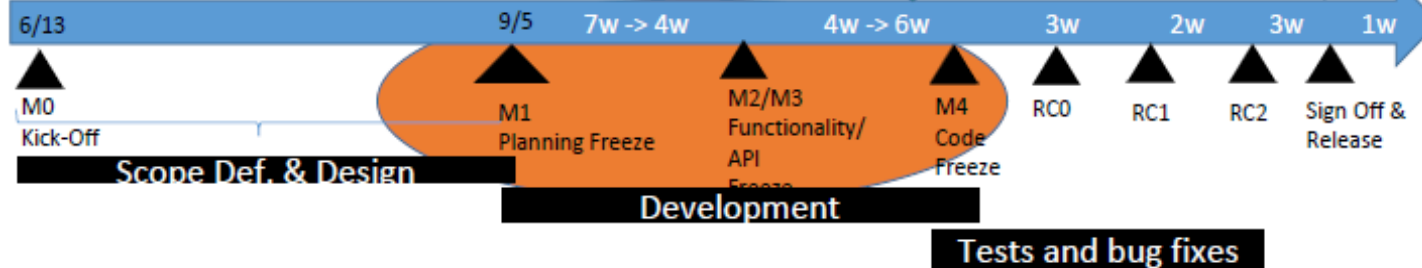
R4 DUBLIN

From Amsterdam to Dublin – ~28 weeks



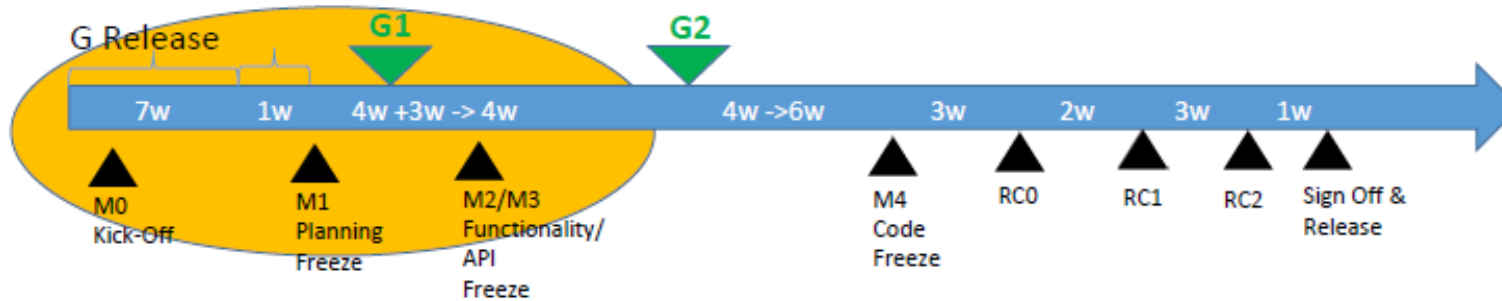
R6 FRANKFURT

Frankfurt



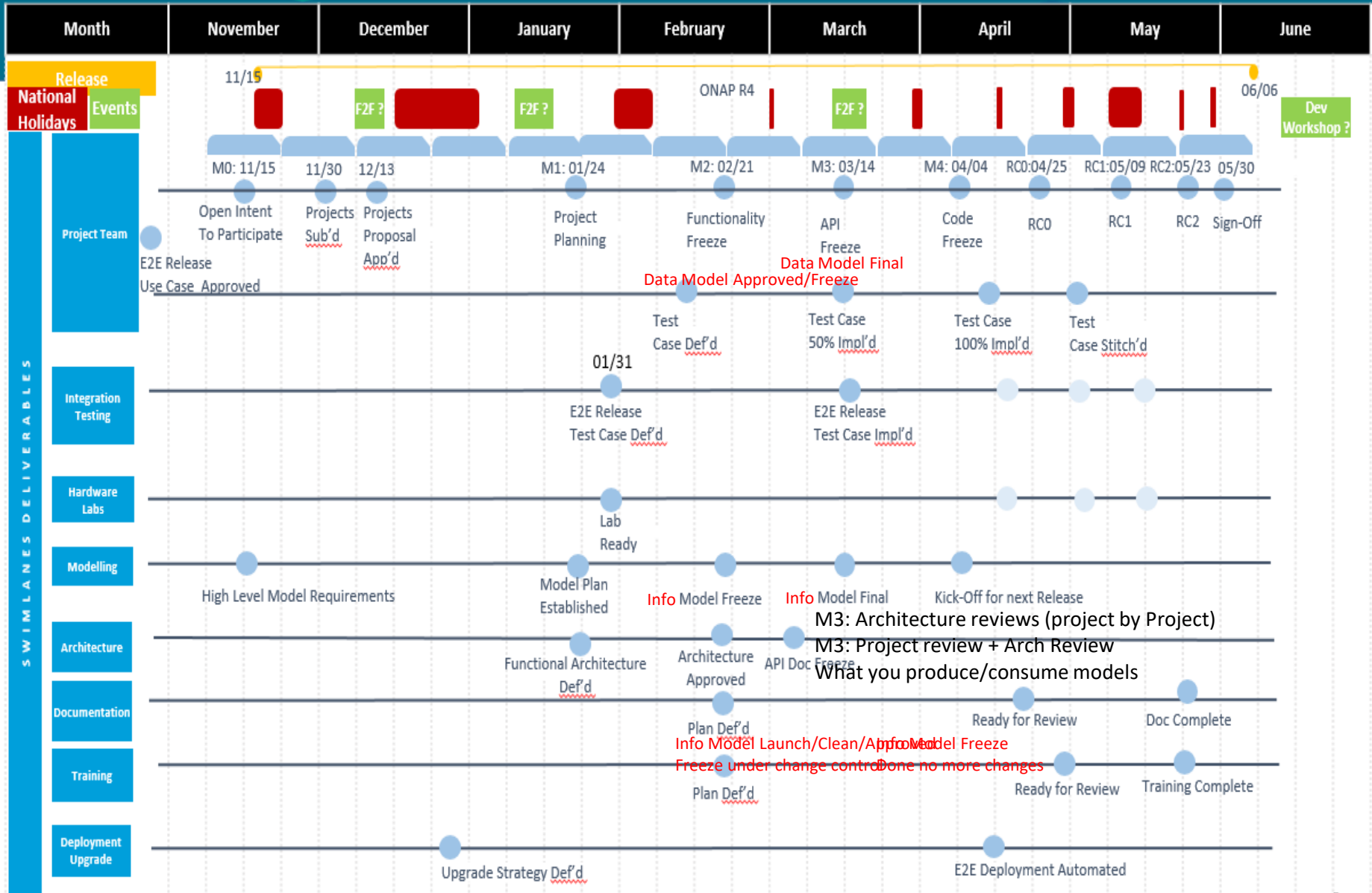
R7 GUILIN

G Release

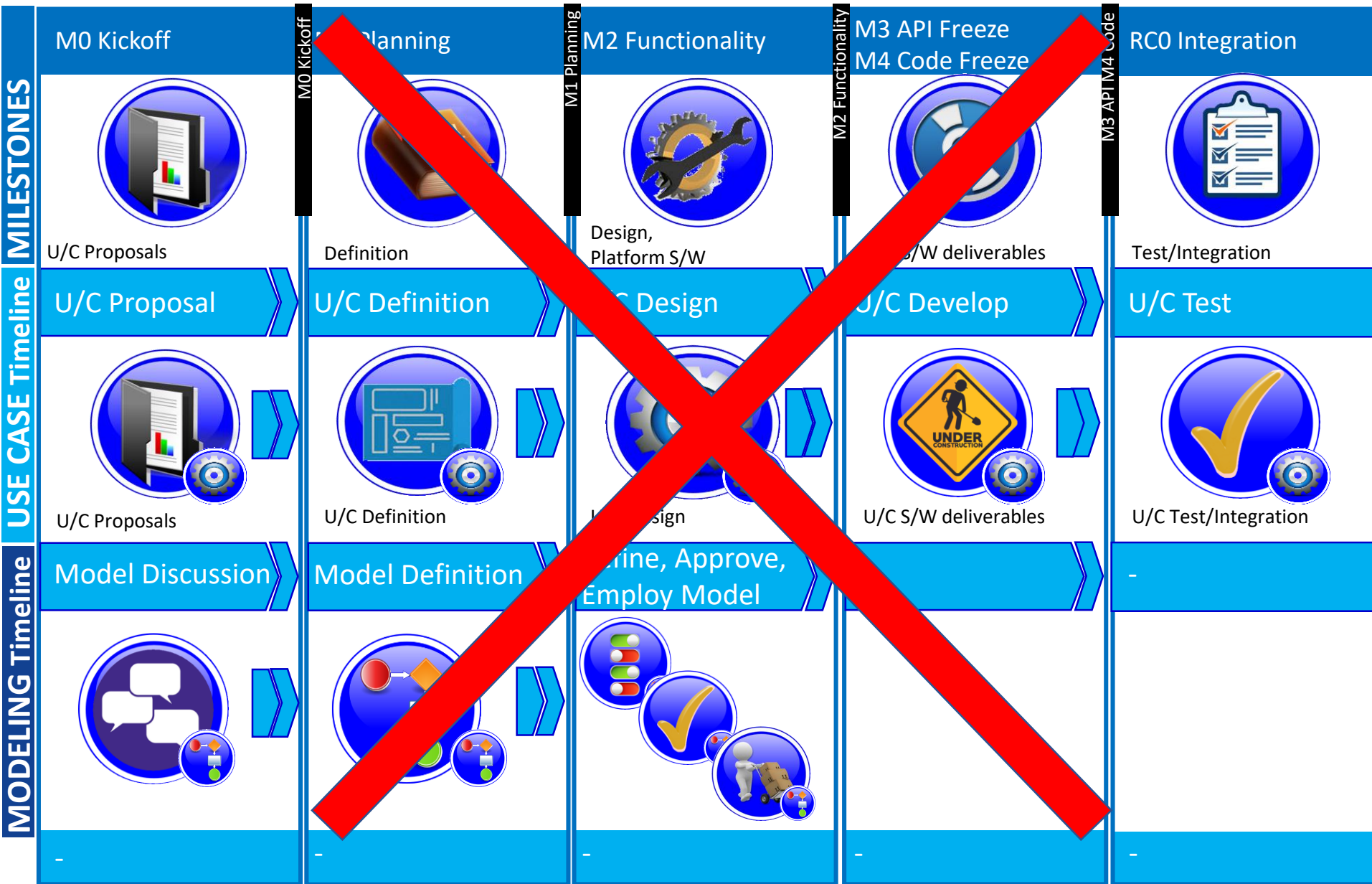




# ONAP Dublin Release Calendar Proposal



# Model & Use Case Development



# Model & Use Case Development



M0 Kickoff

M1. Planning

M2 Functionality

M3 API IM4 Code

RC0, RC1, RC2

# Modeling Process



WHAT  
WHEN  
TIMELINE

WHAT  
DETAILS



M0 Kickoff

M1 Planning

M2 Functionality

M2 Functionality

M3 API Freeze



# Use Case (U/C) Process





Created by [Andy Mayer](#), last modified by [Kevin Scaggs](#) on [Mar 24, 2018](#)

[Go to start of metadata](#)

Proposed ONAP Process Improvements

No Modeling Presence

Add Modeling Swim Lane

Add Modeling Artifacts for appropriate milestones to Modeling Swim Lane

M0

Only Item in M0 timeframe is “Open Intent To Participate”

Add “High Level Info model Requirements”

M1

Project Planning / Functional Architecture Defined / Architecture Approved

Add “Infomodel Plan Established”

Note: Infomodel Updates Begin / Data Model Refinements Begin (M1.5)

Note: Development Commitments for Infomodel Requirements?

M2

Functionality Freeze

Add “Infomodel Freeze” (Approval)

Add “Data Model Freeze” (Approval)

Note: Feed to Data Dictionary??

M3

API Freeze

Add “Infomodel Final”

Add “Component Data Model Final” (Approval – Design Level Compliance)

M4

Code Freeze

Kickoff Information Model Requirements for Next Release

RCx

Runtime Compliance

Observations

Establishes and Evolves a Common Model

Project (Component) Team Involvement in Modeling Solution

Governance of Common Model and Corresponding Component Models

Update possible in M3 and M4 (bug fixes) per exception process

Artifacts

Information Model Artifact Contains

Classes

Relationships with Multiplicity

Important Attributes with Multiplicity

Definitions

Data Types

Feed to Data Dictionary

Tooling - Papyrus with GitHub

Component Data Model Artifacts (Implementation Specific)

Component Data Model

Contains objects, attributes, & relationship

Mapping to Information Model

Feed to Data Dictionary?

API Artifacts

API Model

Mapping to Information Model

New Roles – Model Governance

Information Model

Internal Committers

Internal Approvers

Impacted Project (Component) Approvers

Impacted API Approvers

Architecture Group Approvers

Component Data Models

Internal Committers

Modeling Team Approvers

Architecture Approvers

Impacted API Approvers

API Definitions

Modeling Team Approvers

Impacted Project (Component) Approvers

Architecture Approvers

Benefits

Establishment and Evolution of a Common Model (Model C

Continue Move Toward a Model Driven Design

Improve Data Quality

Example (Failed) in R4 Dublin

**PNF S/W Model Version** – PNF Resource Model

- M0, M1, M2, M3, M4 (R3) – Defined
- M3 Well-Defined
- M4 – never got approved (not included), Use Case Usage

The PNF model was approved WITHOUT the **PNF S/W Model Version**

R4 start of R4 the PNF S/W Upgrade was one scope; and end of R4 change scope

Example A&AI PNF-Name & PNF-ID

- M0, M1, M2, M3, M4 (R3) – Defined
- M3 Well-Defined
- A&AI Schema impact

Example (Worked)

PnP

AT&T would like to put License Model wo/ a Use Case.

**Case 1 U/C starts before Modeling**

Case 2 U/C co-evolves

Case 3 modeling starting U/C after (5G modeling, multi-release)

Think, Michela's view is that there should be no APPROVED model before a Use Case proposal is approved

1 U/C – Arch S/C - Model S/C present SOCIALIZE

2 Details -

3 Wiki -







