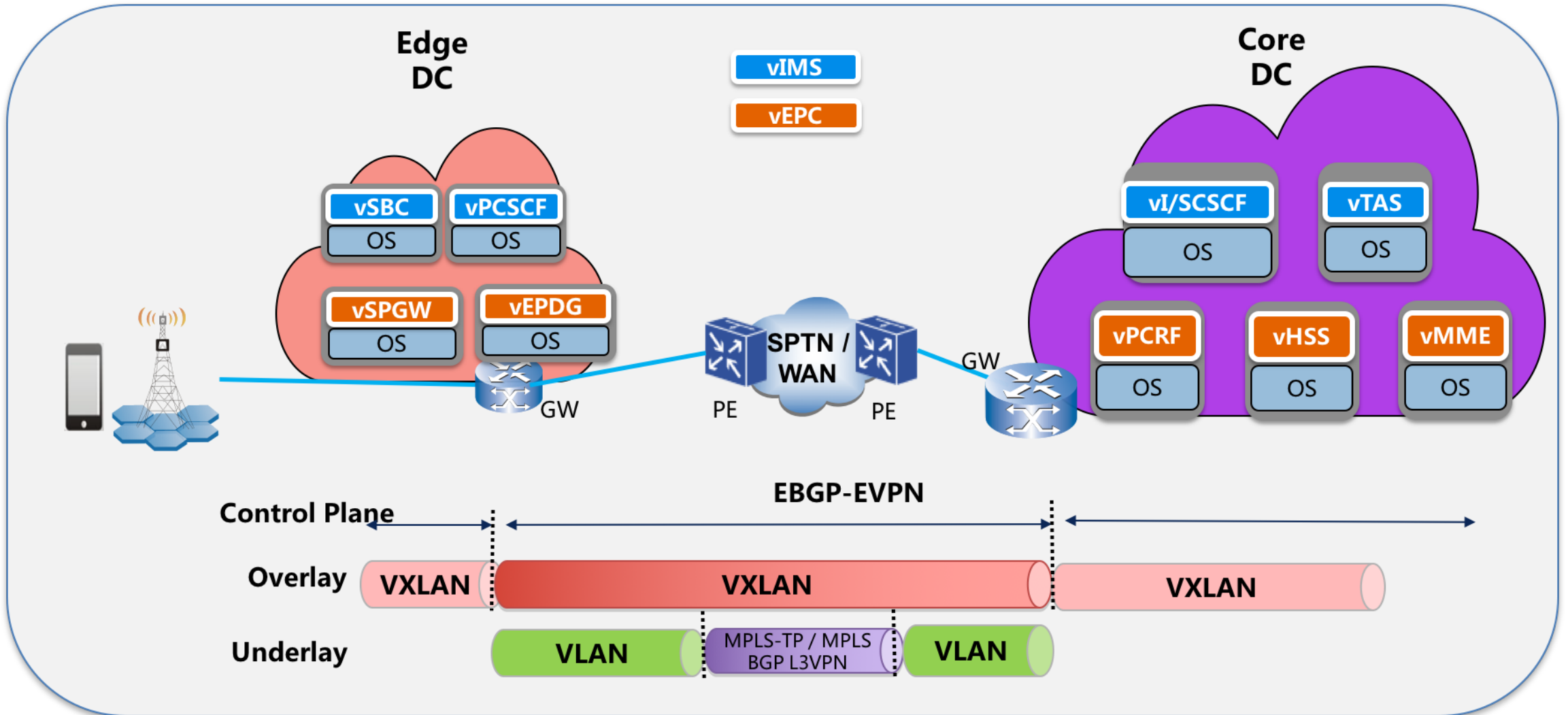
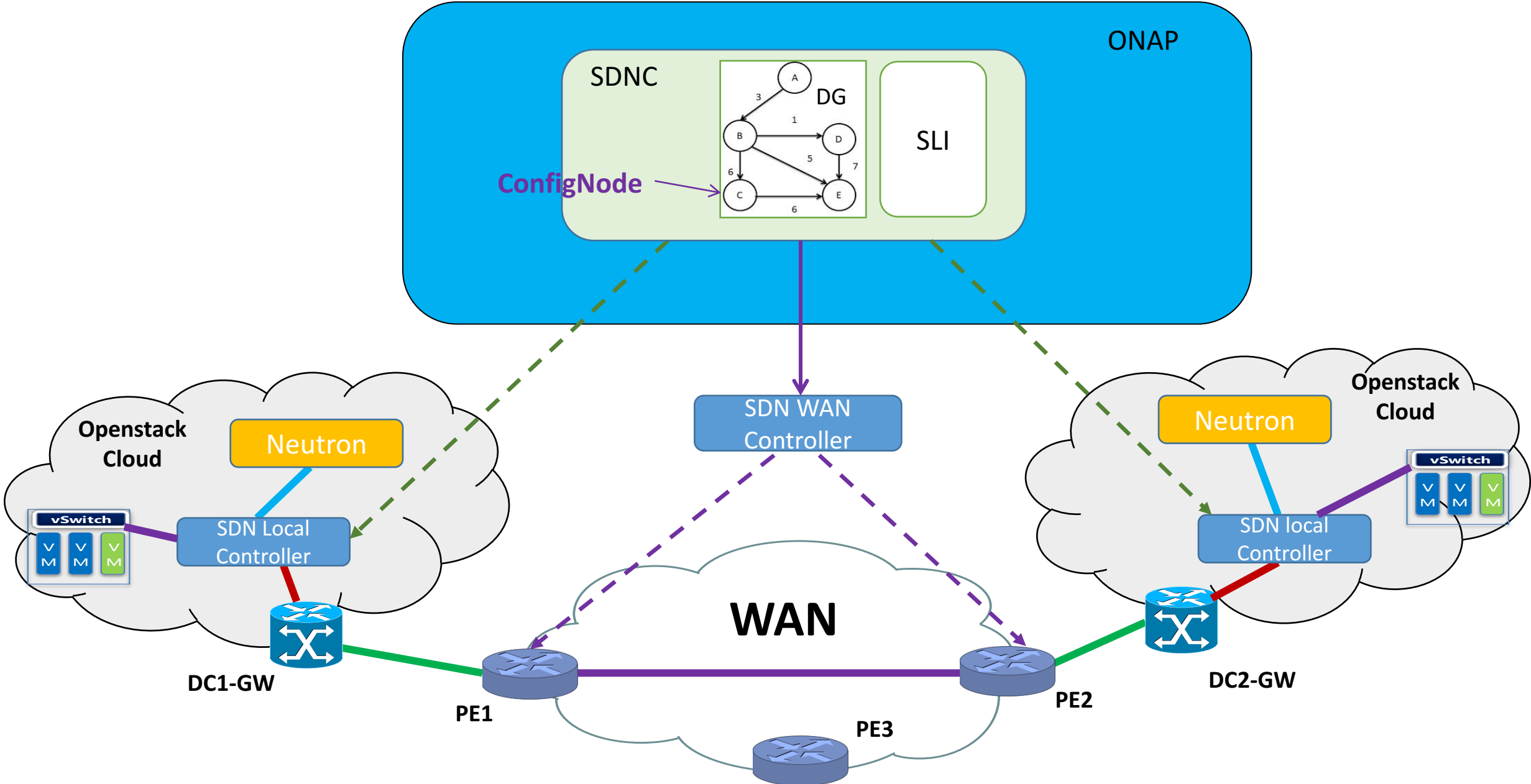


# VoLTE Service Design and Instantiation

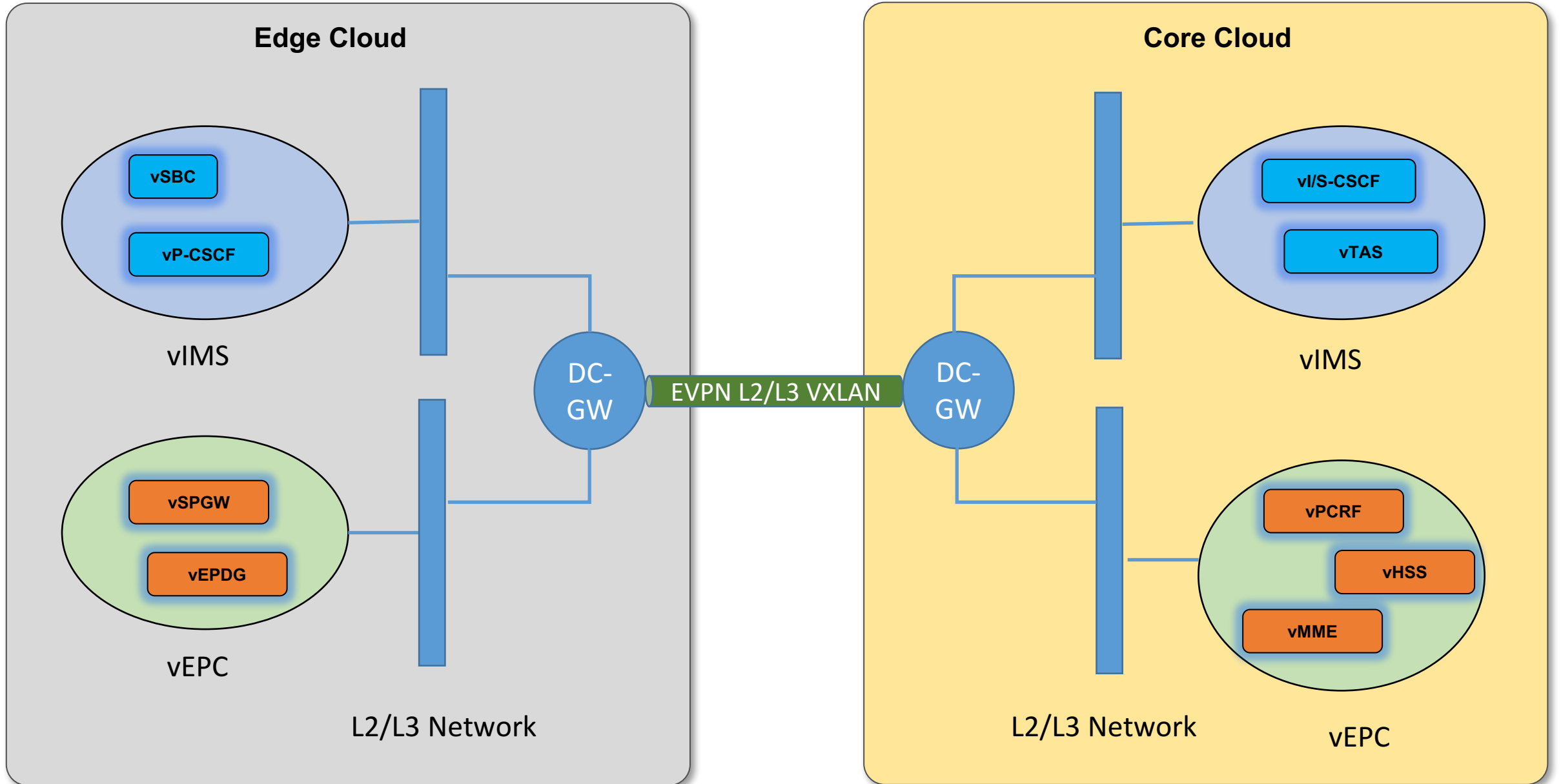
# VoLTE Use Case



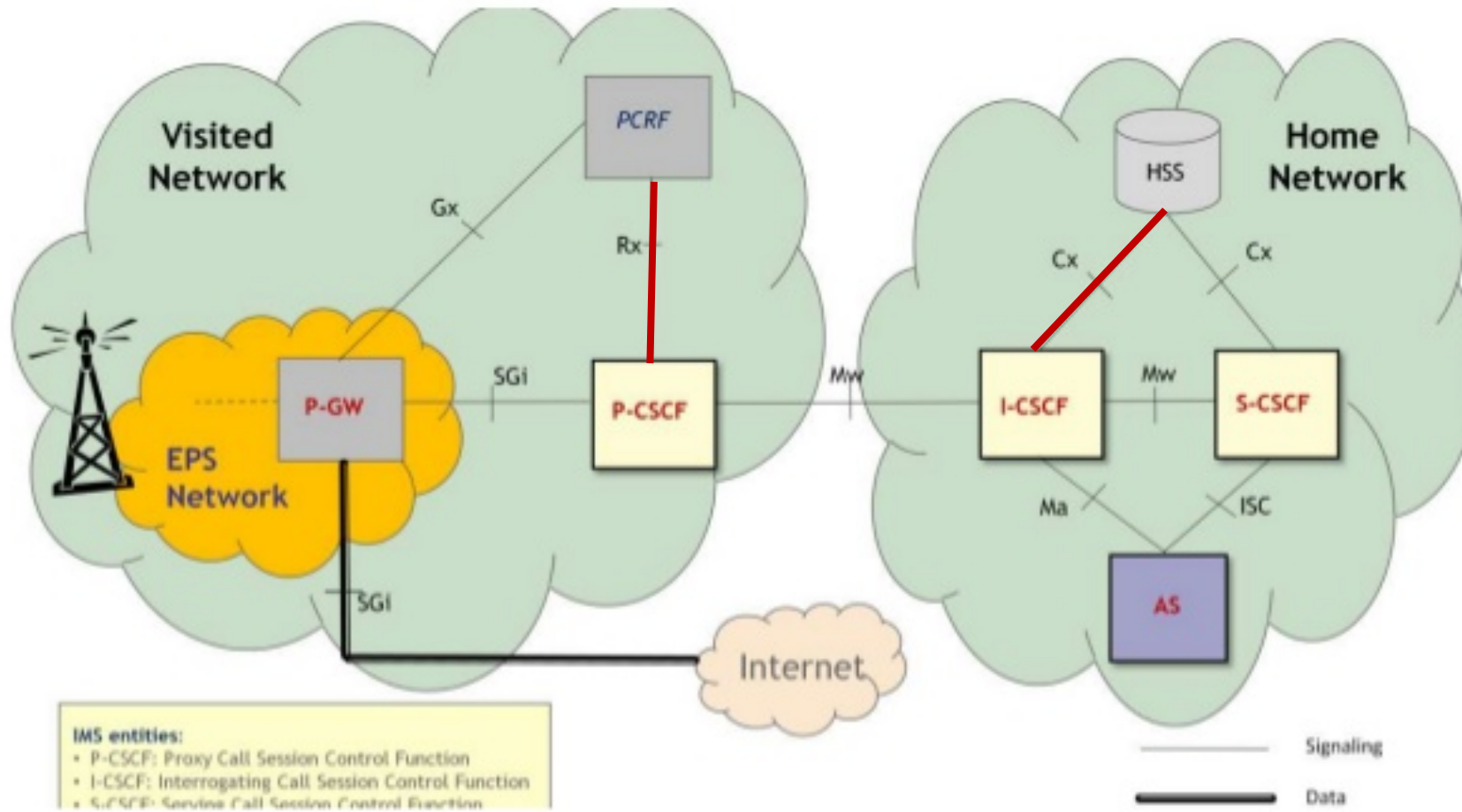
# VoLTE Use Case DCI Overlay and Underlay Network Orchestration



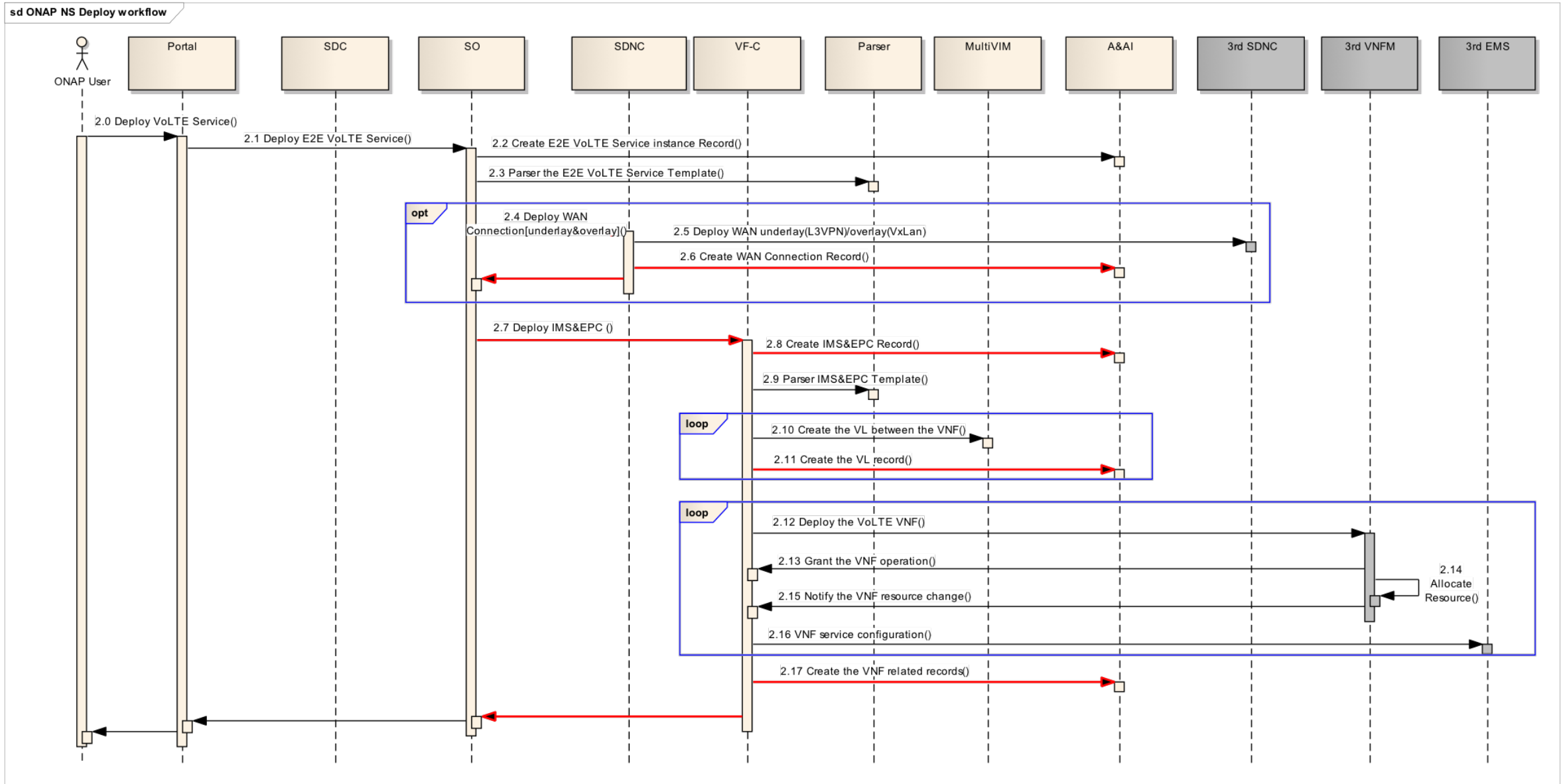
# VNFs Interconnected by DCI Network



# Connections between vEPC and vIMS



# VoLTE Service Instantiation



# Questions On VoLTE Service Design and Instantiation

- 1) Can SDC import and parse TOSCA VNF template? Can SDC design VNF/NS packages based on TOSCA?
- 2) Can we use VID to choose which data center to deploy each VNF component?
- 3) Can SDC design WAN overlay/underlay network connections with PNF resources?
- 4) Can we let VID pick PNFs and input parameters (e.g. VLAN id, VXLAN vni, network id, irt, ert, etc) when instantiating a connection?
- 5) Can SDC put the two NSs templates and DCI network template together, and create one E2E service template?
- 6) Can SO parse the E2E service template and call SDNC to create DCI network and VFC to create 2 NSs with all the information imported and collected by SDC and VID?