

# APPC Dublin M3 Arch Review

March 5, 2019

# Content

- Architecture Changes
- S3P
  - Security
  - Stability
  - Resiliency
- API Change

# Architecture & Model Changes

- No architecture changes since Casablanca.
- No Model changes that impact APPC at this point; APPC does not parse TOSCA Model. Any models consumed by APPC are built specifically for APPC via self-serve tool (APPC CDT) provided by APPC
- Feature: multiple standalone ansible servers support
- ODL upgrade from Oxygen to Fluorine SR1

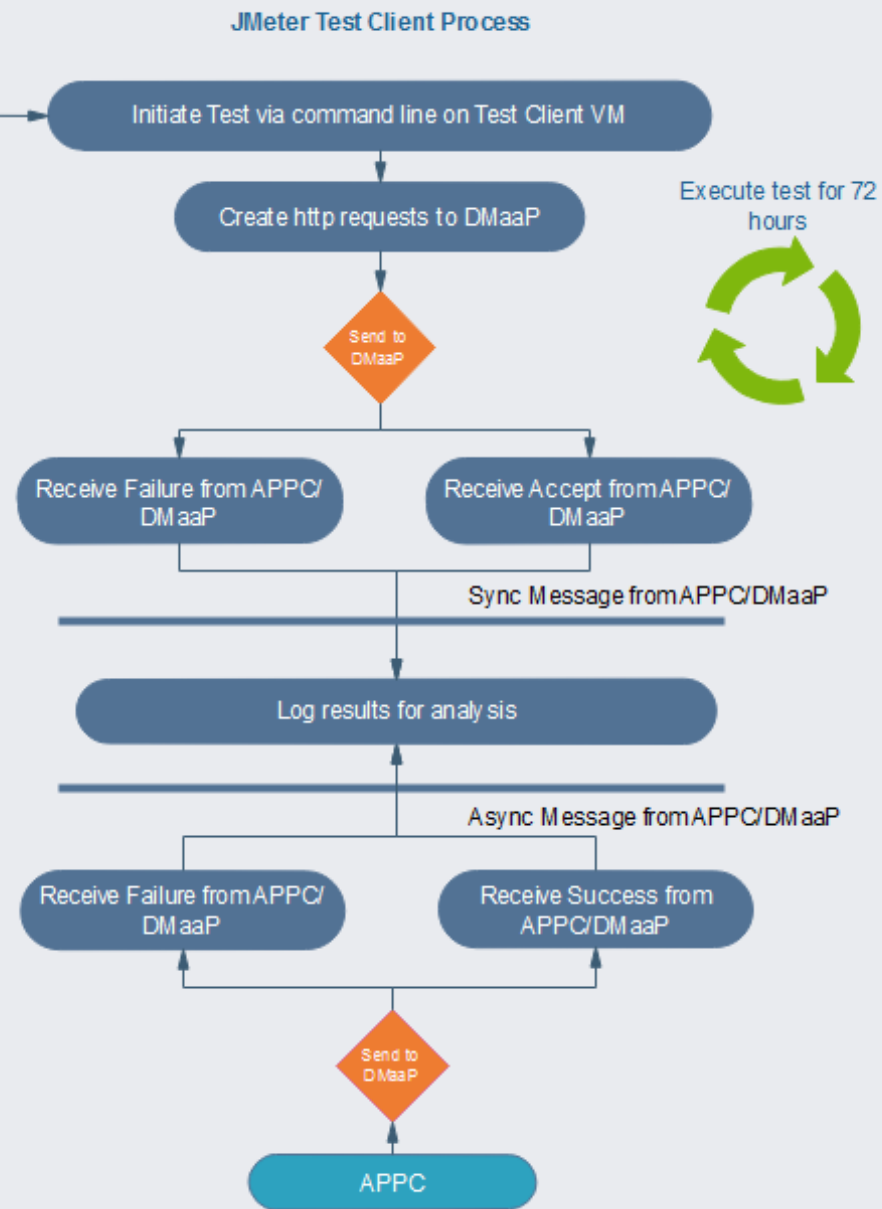
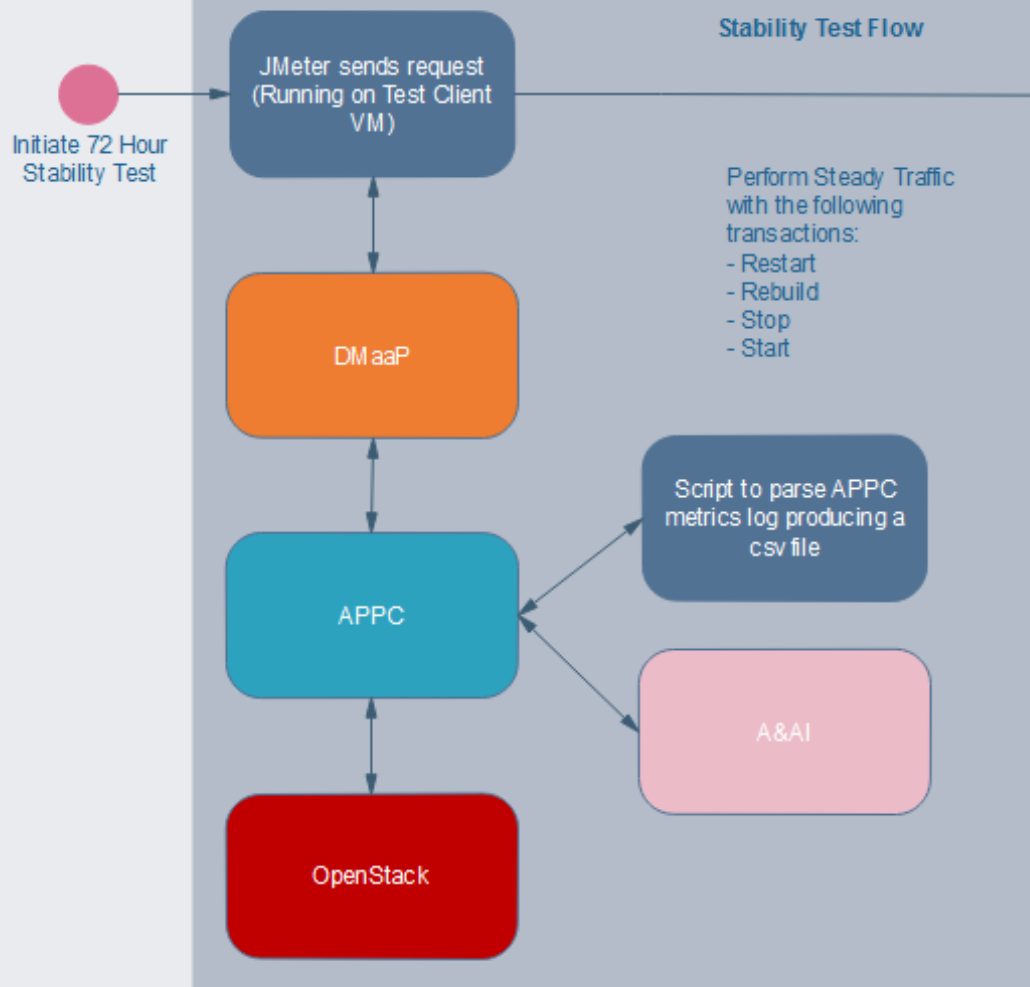


# Security

1. Resolving security issues from Nexus IQ report by M4  
Work being tracked under: <https://jira.onap.org/browse/APPC-1283>  
ODL upgrade to Fluorine SR1 by 2/28. Nexus IQ will be changed afterwards. Target by M4.
2. Docker using non-root user id for application.
3. https/tls support for netconf (5G use case)
4. Code Coverage
  - 55% is R4 goal; up to 83.1% (3/4)



# APPC 72 Hour Stability/Regression Testing



# Resiliency

- working collaboratively with OOM / INT
- CSIT on OOM env
- <https://wiki.onap.org/display/DW/APPC+WindRiver+Lab>
- Move all APPC containers from ubuntu to alpine

# API Changes

- No existing APIs are changed
- The following new API is added to R4:
  - DistributeTrafficCheck (<https://wiki.onap.org/display/DW/R4+API+Document>)
- APIs are (will be) documented in the [APPC LCM Guide](#) in readthedocs.

