











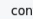



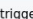


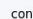






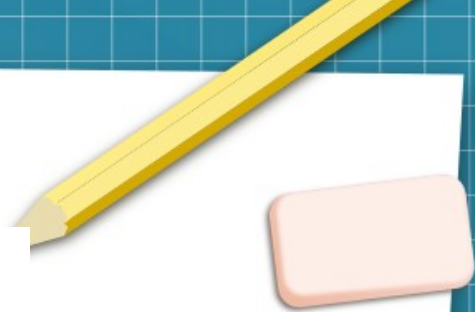




# How to run some ONAP tests

Integration team

| master   |   | check   | apps  | infra_install  | config   |
|--|---|---|---|--|--|
| <b>onap_daily_pod4_master</b><br>master 165 min<br>2021-02-09 02:52:50<br>             |  onap_test |  onap_deploy |  vnf_project_deploy |  config       |  |
| <b>onap_daily_pod4_k8s_master</b><br>master 111 min<br>2021-02-09 01:06:12<br>         |  k8s_test  |  trigger     |  k8s_deploy         |  infra_deploy |  config |
| <b>onap_daily_pod4_k8s_ingress_master</b><br>master 73 min<br>2021-02-08 20:06:00<br>  |  vim_test  |  trigger     |  vim_deploy         |  infra_deploy |  config |
| <b>onap_daily_pod4_master</b><br>master 131 min<br>2021-02-08 02:52:59<br>             |  onap_test |  onap_deploy |  vnf_project_deploy |  config       |  |



✖ Pipeline xtesting-onap 253429736 ▶

| deploy  | onap-security                           | smoke-usecases   | healthcheck     |
|---------|---|------------------|-----------------|
| ✔ pages | ✖ infrastructure_healthcheck_tearardown | ✔ 5gbulkpm       | ✖ cmpv2         |
|         | ✖ security_nonssl_endpoints             | ✔ pnf_registrate | ✔ hvves         |
|         | ✔ security_kube_hunter                  | ✖ basic_cnf      | ✔ vescollector  |
|         | ✔ security_jdpw_ports                   | ✖ basic_network  | ✖ basic_onboard |
|         | ✔ security_cis_kubernetes               | ✖ vnf_basic_vm   | ✖ basic_cds     |
|         | ✖ security_unlimitedted_pods            |                  | ✔ postinstall   |
|         | ✖ security_root_pods                    |                  | ✔ healthdist    |



# ONAP Xtesting results

43.0%

LAST CHECK



TREND

MASTER  
ONAP VERSION

ORANGE  
LAB OWNER

## infrastructure-healthcheck

2021-02-09 05:33

25.0%

LAST CHECK

Full results

- ✓ [onap-helm](#)
- ✗ [onap-k8s-teardown](#)
- ✗ [nodeport\\_check\\_certs](#)
- ✗ [onap-k8s](#)

## healthcheck

2021-02-09 05:33

55.0%

LAST CHECK

Full results

- ✓ [core](#)
- ✗ [full](#)
- ✓ [hv-ves](#)
- ✓ [postinstall](#)
- ✗ [basic\\_onboard](#)
- ✗ [cmpv2](#)
- ✓ [healthdist](#)
- ✓ [ves-collector](#)
- ✗ [basic\\_cds](#)

## smoke usecases

2021-02-09 05:33

40.0%

LAST CHECK

Full results

- ✓ [50bulkpm](#)
- ✗ [basic\\_vm](#)
- ✓ [pnf-reqstrate](#)
- ✗ [basic\\_network](#)
- ✗ [basic\\_cnf](#)

## security

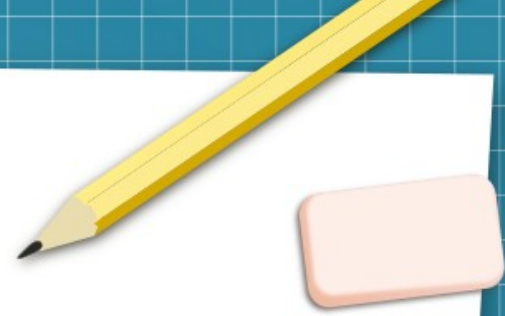
2021-02-09 05:33

50.0%

LAST CHECK

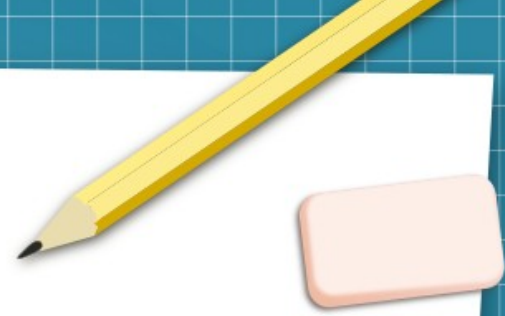
Full results

- ✗ [root\\_pods](#)
- ✗ [unlimited\\_pods](#)
- ✓ [cis\\_kubernetes](#)
- ✗ [nonssl\\_endpoints](#)
- ✓ [jdkpw\\_ports](#)
- ✓ [kube\\_hunter](#)



# Testing Categories

- Infra-healthcheck
- Healthcheck
- Smoke-usecases
- Security

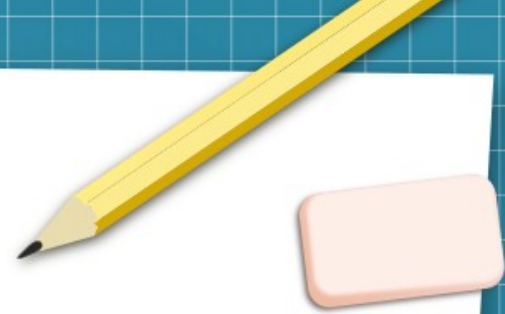


# Focus on 3 tests

- Onap-k8s (infrastructure-healthcheck)
- Full (robot)
- basic\_vm (smoke-usecases)

See official doc to get the descriptions of all the tests available in the CI/CD

<https://docs.onap.org/projects/onap-integration/en/latest/integration-tests.html#automatic-tests>





Search docs

- Integration missions
- Integration Maintenance Release Notes
- Integration Release Notes
- Integration repositories
- Integration resources
- ONAP Integration Labs
- CI/CD

Tests

- Use Cases
- CSIT Tests

Automatic Tests

- Infrastructure Healthcheck Tests
- Healthcheck Tests
- Smoke Tests
- Security Tests

Stability Testing

Tooling

## Automatic Tests

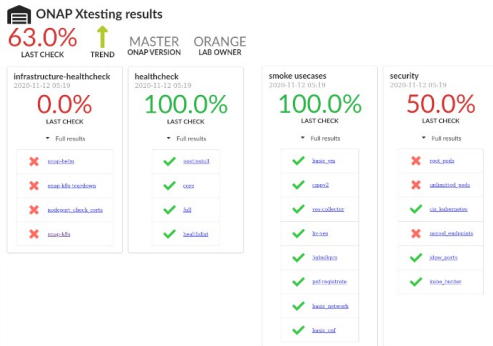
These tests are run daily/weekly on each new gate (new patchset in OOM, clamp or SO). They can be in any language (bash, go, python,...), leveraging any test framework (robotframework, MTS, python-onapSDK). They are all embedded in xtesting dockers.

### Hint

Automatic tests are currently divided in 4 different categories:

- infrastructure-healthcheck: tests from OOM checking the ONAP namespace, certificates...
- healthcheck: basic tests on components
- smoke tests: end to end tests
- security tests

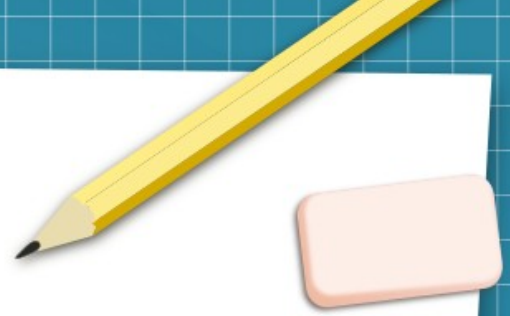
A dashboard summarizing the status and providing the links to the test result page or the logs is automatically created at the end of the execution of the tests.

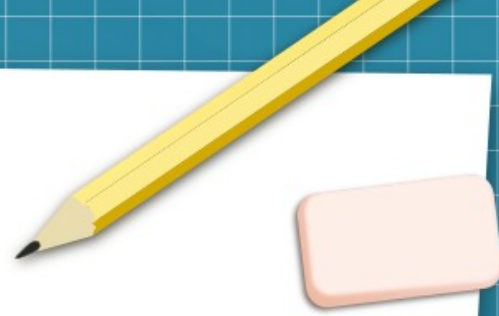


All the pages and artifacts are pushed to LF backend:

- Daily chains: <https://logs.onap.org/onap-integration/daily>
- Weekly chains: <https://logs.onap.org/onap-integration/weekly>
- Gating chains: <https://logs.onap.org/onap-integration/gating>

### Infrastructure Healthcheck Tests





## Infrastructure Healthcheck Tests

### *Infrastructure Healthcheck Tests*

| Tests                | Description  | Code                          | Comments                               |
|----------------------|--|-------------------------------|--|
| onap-helm            | Verify Helm chart status   | <a href="#">python module</a> |  |
| onap-k8s             | Check common resources of the ONAP Kubernetes namespace  | <a href="#">python module</a> | kubernetes python library              |
| nodeport_check_certs | This test list the nodeports and tries to get SSL information to evaluate the validity of the certificates (expiration and issuer) used on the nodeports | <a href="#">python module</a> | pyopenssl, kubernetes python libraries |

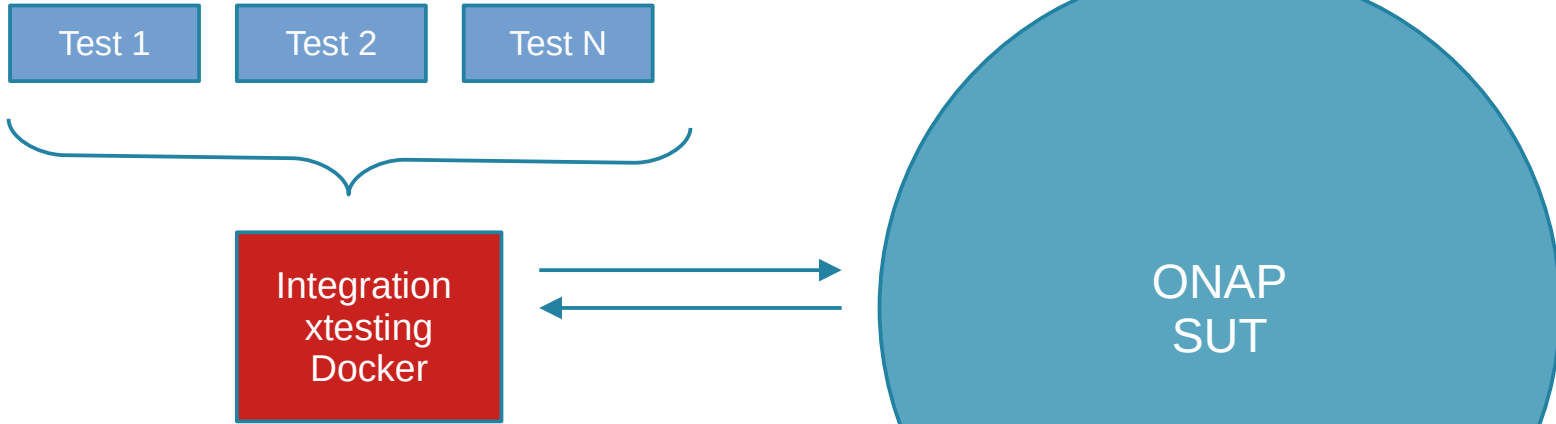
See [Infrastructure Healthcheck README](#) to adapt then run infrastructure healthcheck tests on your own system.

Please note that the onap-k8s is run 2 times in CD chains. It is run just after the installation (onap-k8s) and at the end of the test execution (onap-k8s-teardown) in order to collect the logs of the different components during the test execution.





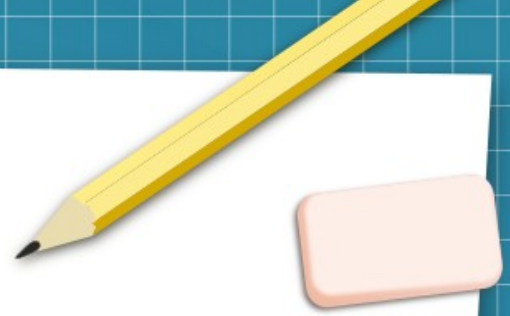
ONAP  
SUT

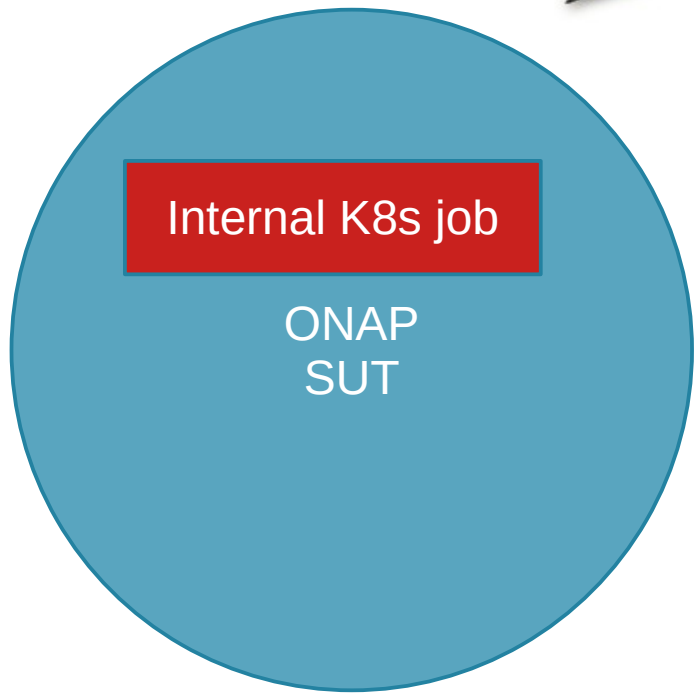
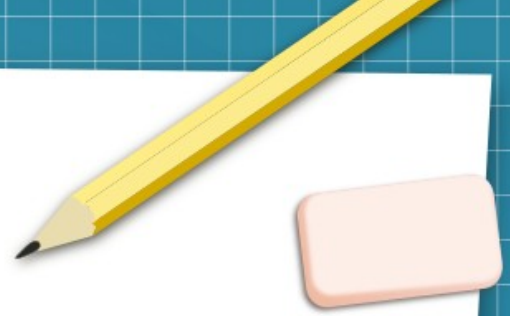


[onap-k8s \(nexus3.onap.org:10003/onap/xtesting-security\)](https://nexus3.onap.org:10003/onap/xtesting-security)  
[basic\\_vm \(nexus3.onap.org:10003/onap/xtesting-smoke-usecases-pythonsdk\)](https://nexus3.onap.org:10003/onap/xtesting-smoke-usecases-pythonsdk)



Integration in CI/CD



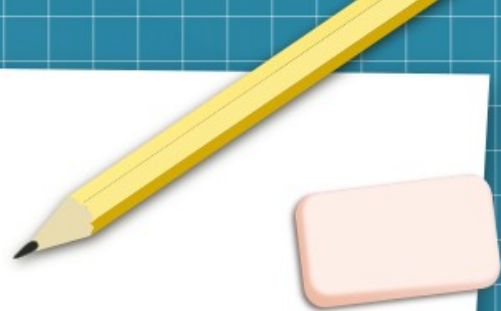


full  
Integration-onap-full      0/1      4h26m      4h26m



Integration in CI/CD

Demo





This work is licensed under a Creative Commons Attribution-ShareAlike 3.0 Unported License. It makes use of the works of Mateus Machado Luna.

