

R9 CMP v2

(Copy this Page in the ... select COPY)

Use Case Overview & Description

(description of U/C)

Use Case Key Information

TOPIC	DESCRIPTION	WIKI PAGE
Requirements Proposal	This is a link to the requirements proposal made on the Requirements Sub-committee	
Architecture S/C info	Information on the Architecture sub-committee presentation	
Prior Project "Base" Wiki	Link to the "base" wiki for the Use Case, or work from a prior release.	
Requirements Jira (REQ-###) Ticket	Link to the REQ Jira ticket for this use case	
Key Use Case Leads & Contacts	USE CASE LEAD: @xyz USE KEY CONTACTS:	
Meetings Register & Recordings	Link to Use Case Team meetings.	

BUSINESS DRIVER

This section describes Business Drivers needs. These business drivers are presented on the Requirements Sub-committee and should also be put into the release requirements sub-committee page.

Executive Summary - (Give a short description of your Use Case, the "Executive 2 min elevator pitch", this describes the "**WHAT**")

Business Impact - (This is the Business Impact which describes why this use case is important from a business perspective, this describes the "**WHY**").

Business Markets - (This is the marketing analysis, which can include but not limited to applicable markets, domains, marketing projections, this can describe the "**WHERE**").

Funding/Financial Impacts - (The Funding requirements and Financial impacts can describe the financial savings, or CAPEX, OPEX impacts for a Use Case).

Organization Mgmt, Sales Strategies - (It is suggested that you use the following wording): *There is no additional organizational management or sales strategies for this use case outside of a service providers "normal" ONAP deployment and its attendant organizational resources from a service provider.* (This would typically describe the "**WHO**", but because use cases are all deployed with ONAP itself, these two areas come with the actual ONAP deployment and uses the organizational management and sales strategies of a particular service provider's ONAP deployment)

Development Status

PROJECT	PTL	User Story / Epic	Requirement
A&AI	William Reehil		
AAF	Jonathan Gathman		
APPC	Takamune Cho		
CLAMP	Gervais-Martial Ngueko		
CC-SDK	Dan Timoney		
CPS	Toine Siebelink		
DCAE	Vijay Venkatesh Kumar		
DMaaP	Mandar Sawant (Old) Fiachra Corcoran (New)		
External API	Adrian OSullivan		
HOLMES	Guangrong Fu		

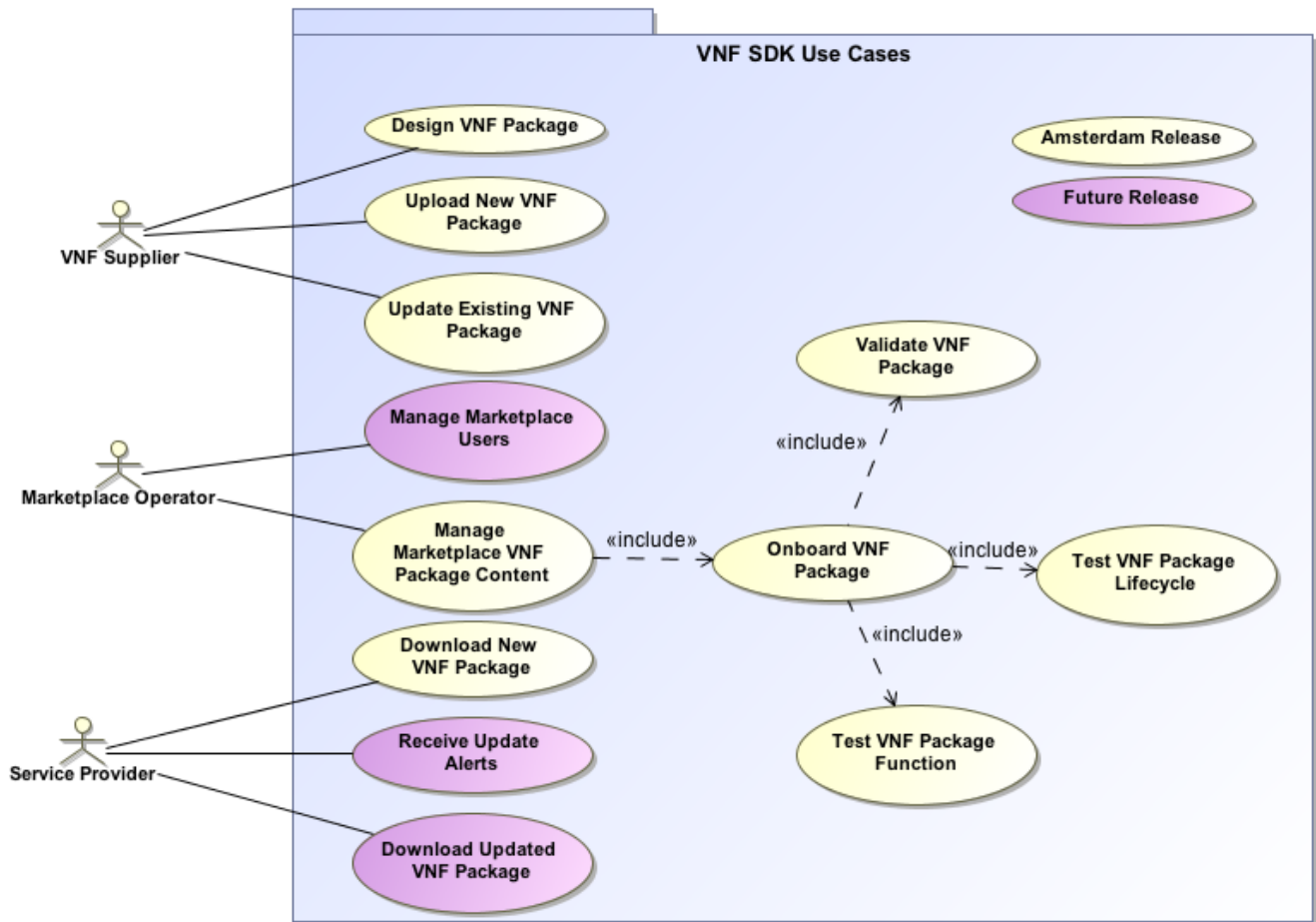
MODELING	Hui Deng		
Multi-VIM / Cloud	Bin Yang		
OOF	krishna moorthy		
OOM	Sylvain Desbureaux	Certificate Manager Expiry	
POLICY	Jim Hahn		
PORTAL	Sunder Tattavarada		
SDN-C	Dan Timoney		
SDC	Christophe Closset		
SO	Seshu Kumar Mudiganti		
VID	Ikram Ikramullah		
VF-C	Yuanhong Deng		
VNFRQTS	Steven Wright		
VNF-SDK	Weitao Gao (Old) user-67d6f (New)		
CDS	Yuriy Malakov		

List of PTLs: [Approved Projects](#)

*Each Requirement should be tracked by its own User Story in JIRA

USE CASE DIAGRAM

Use cases define how different users interact with a system under design. Each use case represents an action that may be performed by a user (defined in UML as an Actor with a user persona).



Use Case Functional Definitions

Use Case Title	<i>Title of the Use Case</i>
Actors (and System Components)	<i>The list of Actors and System Components that participate in the Use Case</i>
Description	<i>Short overview of the Use Case</i>
Points of Contact	<i>Authors and maintainers of the Use Case.</i> <i>Use Case Lead, Key Use Case members and code contributors.</i>
Preconditions	<i>A list of conditions that are assumed to be true before the Use Case is invoked</i> <i>Includes description of Information Consumed</i>
Triggers / Begins when	<i>Describes the trigger for beginning the Use Case</i>
Steps / Flows (success)	<i>Describes the sequence of steps and interactions that occur during the Use Case (may include: description, data exchanges, functionality, state changes)</i> <i>Interaction diagrams may be included or referenced</i>
Post-conditions	<i>The expected results of the execution of the Use Case</i> <i>Includes description of Information Produced</i>
Alternate / Exception Paths	<i>Description of any exceptions or special process that could occur during Use Case</i>
Related Use Cases	<i>List of the Use Cases referenced by this Use Case</i>
Assumptions	<i>Describes any assumptions that are made for this use case</i>

TESTING

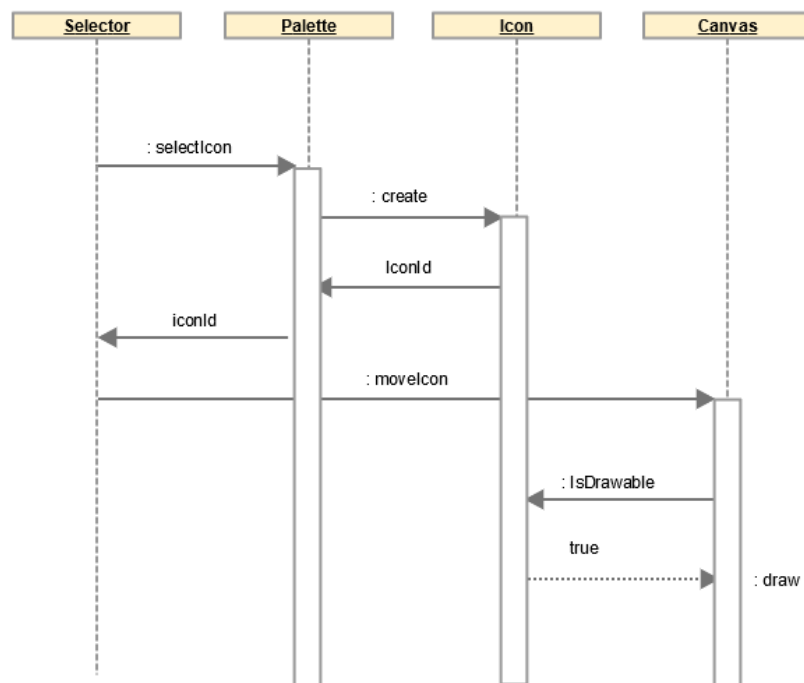
Current Status

1. Testing Blockers
2. High visibility bugs
3. Other issues for testing that should be seen at a summary level
4. Where possible, always include JIRA links

End to End flow to be Tested

This should be a summary level Sequence diagram done in Gliffy

Summary Sequence Diagram



Test Cases and Status

1	There should be a test case for each item in the sequence diagram	NOT YET TESTED
2	create additional requirements as needed for each discreet step	COMPLETE
3	Test cases should cover entire Use Case	PARTIALLY COMPLETE