

Secret Management Service

API Documentation:

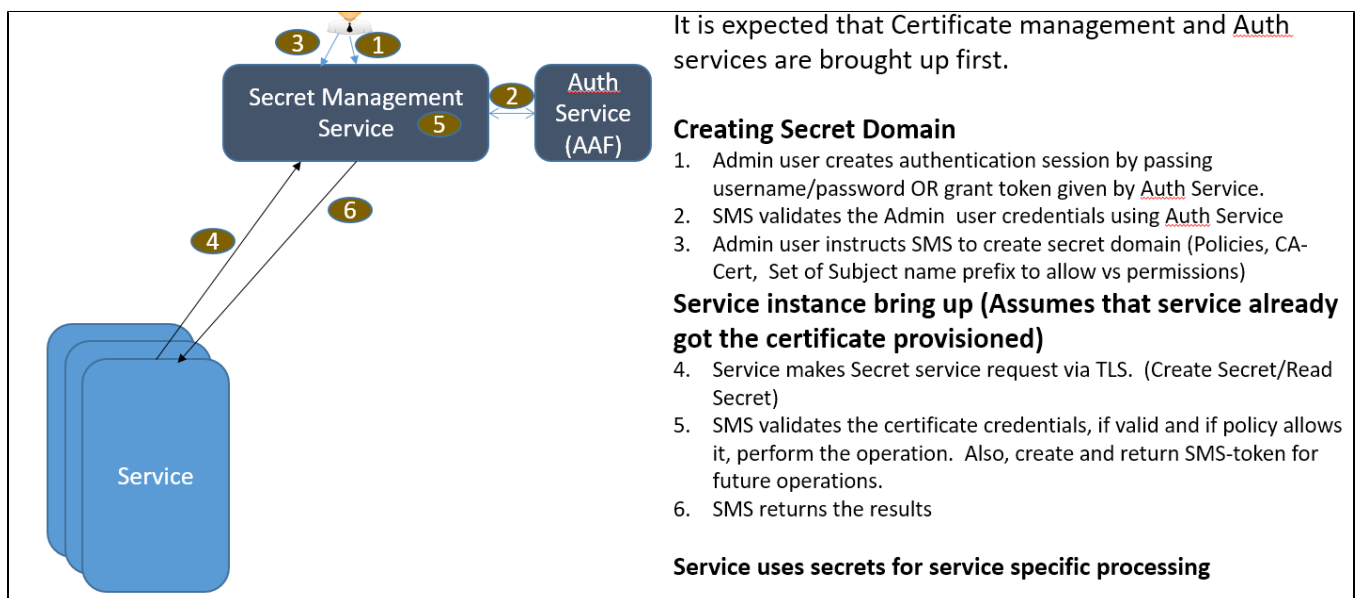


[Link to Code Coverage Page](#)

The project will provide a Secret Management Service with the following features and capabilities:

- Support multiple Secret domains
 - Each domain can be used to multiple secrets
 - Each domain is associated with various policies
- Each secret can have multiple key value pairs
- Certificate based authentication
- Authenticate users with AAF
- Token based authentication
- Securely store secrets using AES encryption
 - Use TPM/SGX for key storage if available
- RESTful API support for ADD, UPDATE, DELETE of secrets

The below diagram illustrates the Secret Service High Level Flow in an ONAP Context



The below diagram illustrates how a micro service will use the Secret Client Agent to talk to the Secret Service to store or retrieve passwords.

