

NSMF and Common NSSMF

Table of Contents

- 1. NSI Instantiation
- 2. NSI/NSSI Deallocation
 - Interface details
- Actions
 - New APIs
 - Deallocate NSI api (NSMF)
 - Deallocate NSSI api (NSSMF)
 - Nxl Termination (OOF)
 - Consumed APIs (Existing)

Abbreviations

Abbreviations	Description
CN	Core Network
NSI	Network Slice Subnet Instance
NSMF	Network Slice Management Function
NSSMF	Network Slice Subnet Management Function
RAN	Radio Access Network
TN	Transport Network
UUI	User-to-User Information

1. NSI Instantiation

1.1. This sequence diagram shows the NSMF and NSSMF interactions for RAN Slicing Option 1, and when all NSSMFs are within ONAP.

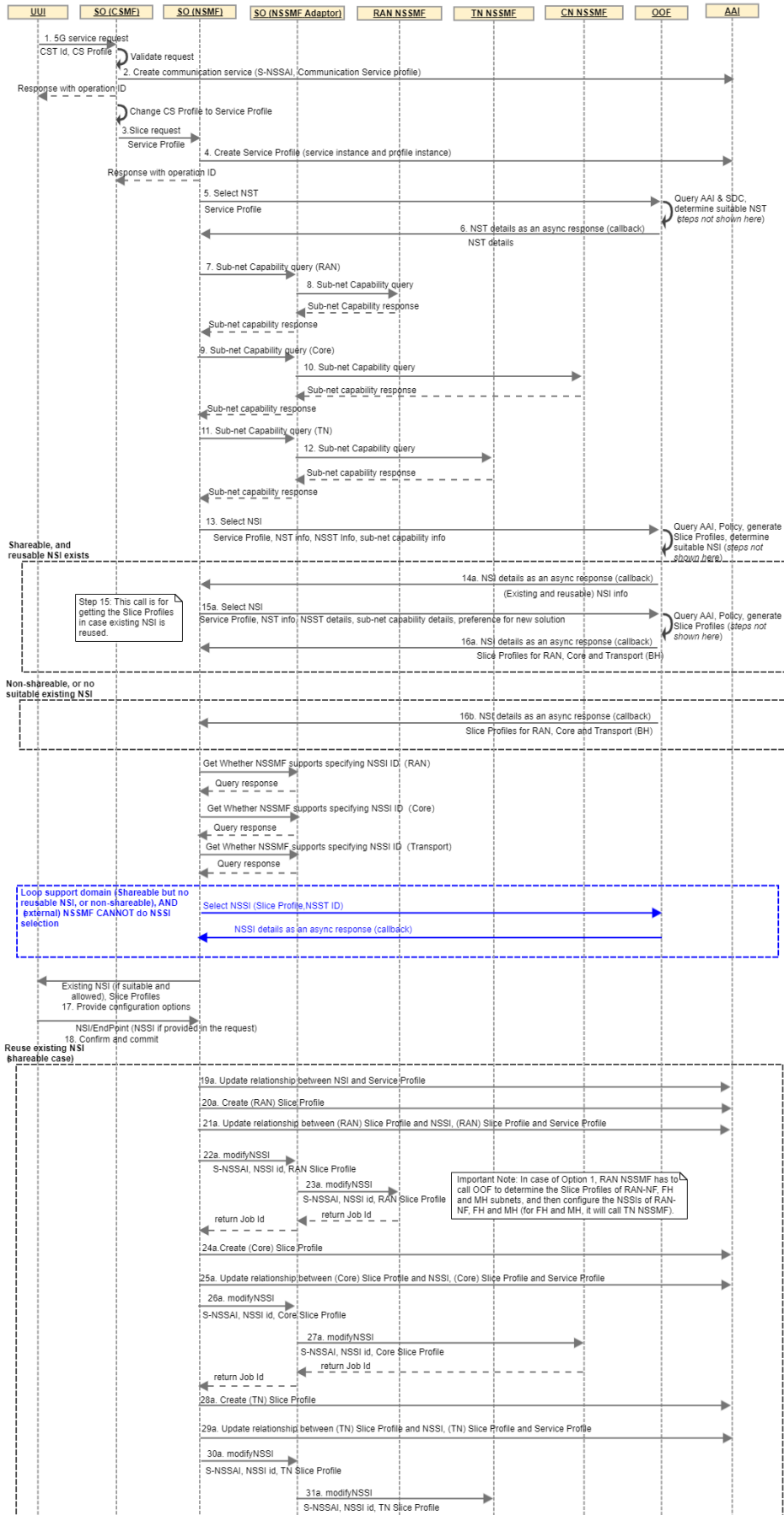
Assumptions

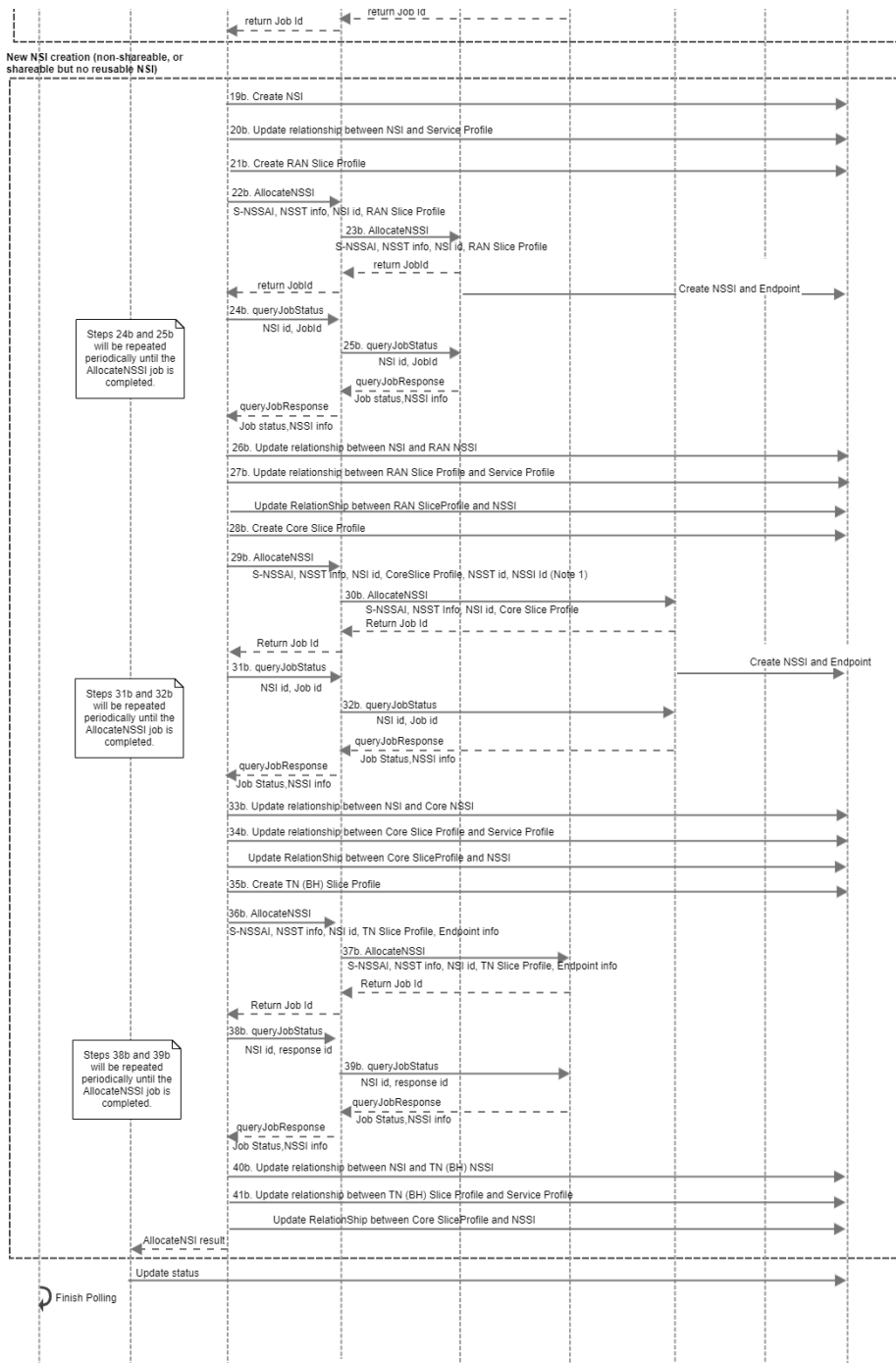
- RAN Option 1 or Option 2 shall be determined by NSMF by examining the NST contents.
- NSMF shall determine if it has to do NSSI selection (in case of external NSSMF) for a domain by checking the vendor in the NSST.
- In case of internal NSSMF, the "<Domain> NSSMF" (domain = AN/TN/CN) shown in below figure shall be SO. SO (NSSMF) will further interact with other components (e.g. SDN-C/SDN-R/CDS) for domain-specific NSSMF actions.
- Steps in **Blue** are applicable only in case of external NSSMF.

Notes in the figure

1. Step 29b: NSSI id shall be passed from NSMF to NSSMF in case of (external) NSSMF that cannot do NSSI selection.

Sequence Diagram





1.2. This sequence diagram shows the NSMF and NSSMF interactions for RAN Slicing Option 2, and when RAN and Core NSSMFs are outside ONAP.

Some of the key aspects are provided in above diagram in Section 1. We will prepare a separate diagram soon for clarity.

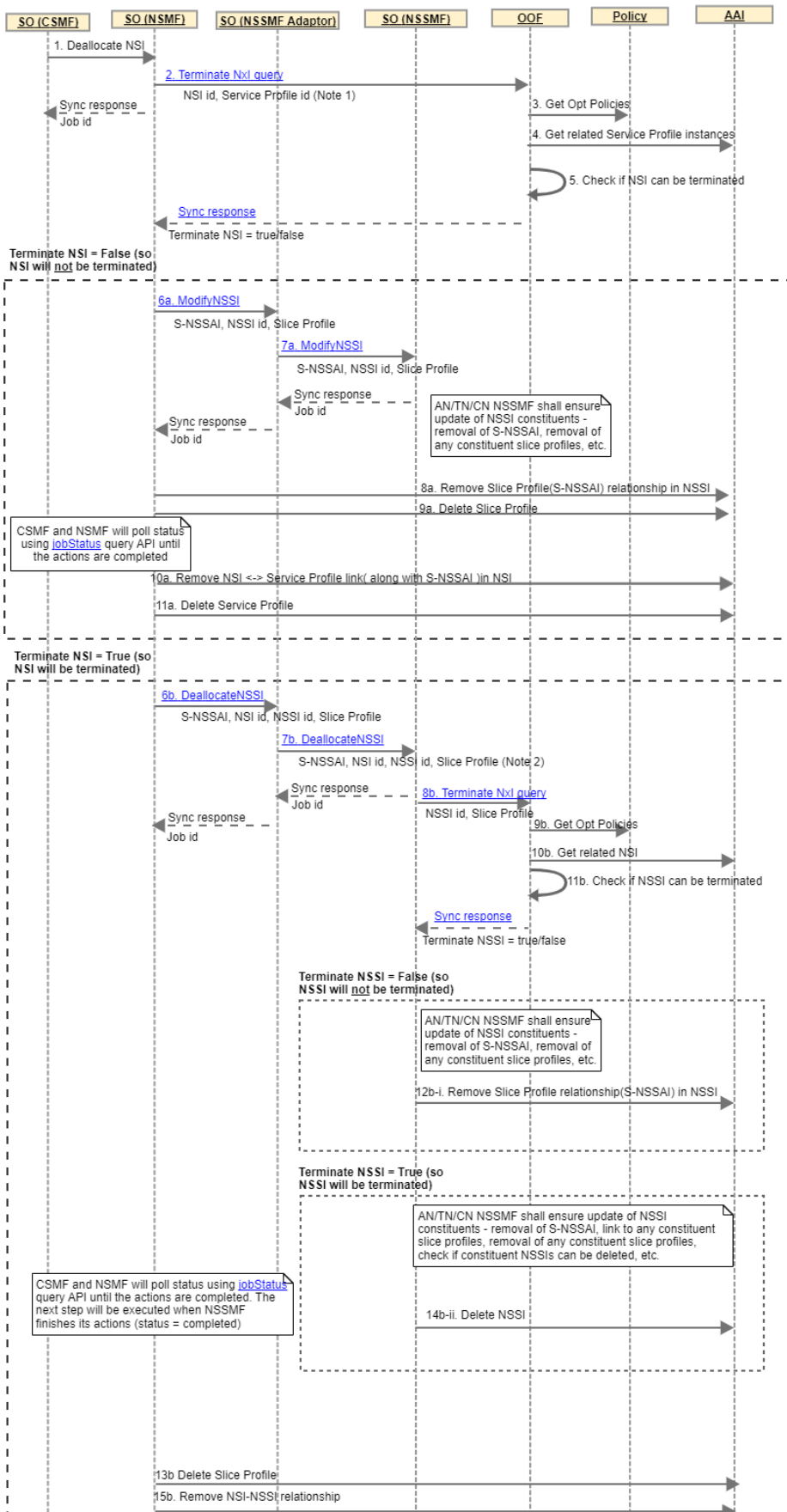
2. NSI/NSSI Deallocation

Notes

1. In G-release, OOF may simply check if there is only 1 Service Profile linked to the NSI (and assume it is linked to the NSI that is being queried for termination). In this case, Service Profile need not be passed as a parameter in the terminateNxI API towards OOF.

2. In G-release, OOF may simply check if there is only 1 Slice Profile linked to the NSSI (and assume it is linked to the NSSI that is being queried for termination). In this case, Slice Profile need not be passed as a parameter in the terminateNxl API towards OOF.

Sequence Diagram





Interface details

Actions

New APIs

Deallocate NSI api (NSMF)

Input: NSI details

Output: Terminating/Cannot terminate

Final output: Success/Failure with reason

Deallocate NSSI api (NSSMF)

Input: NSSI details

Output: Terminating/Cannot terminate

Final output: Success/Failure with reason

Nxl Termination (OOF)

Input: NSI/NSSI details

Output: Yes/No with reason

Consumed APIs (Existing)

- Get related Service profile instance (AAI)
- Get related NSI (AAI)
- Get NSSI details related to NSI (AAI)
- Delete NSI-NSSI relationship (AAI)
- Delete NSI/NSSI entry from AAI (AAI)

Old diagram - just for reference (not to be used, please refer to the diagram above for NSI deallocation)

