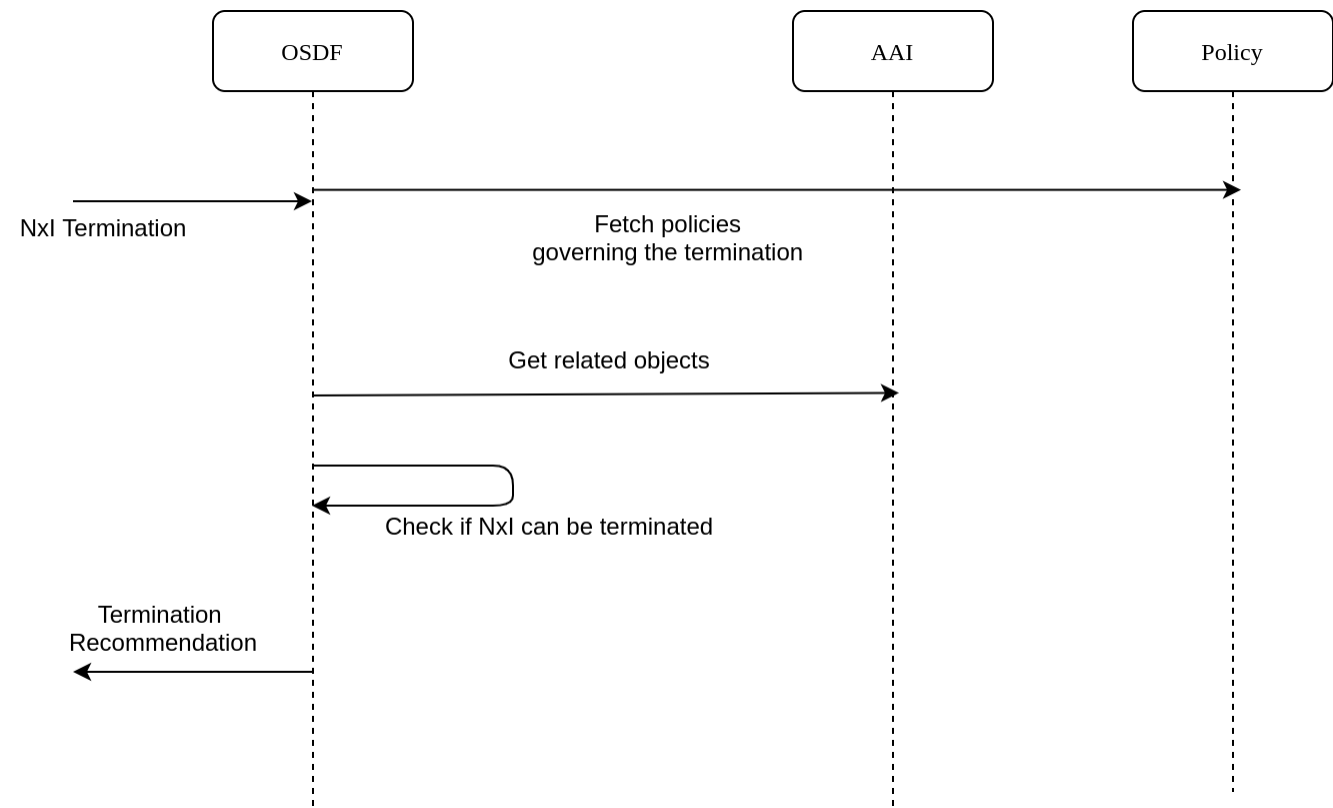


# Nxl Termination

Sequence Diagram



## Interfaces

- 1. Nxl termination request.
  - a. Type
  - b. Nxl identifier
- 2. Fetch policies which may influence the recommendation (Optional)
- 3. Get related objects from AAI for the requested Nxl.
- 4. Check if Nxl can be terminated.
- 5. Termination recommendation.
  - a. Termination decision
  - b. Reason

## APIs

New API - Nxl Termination